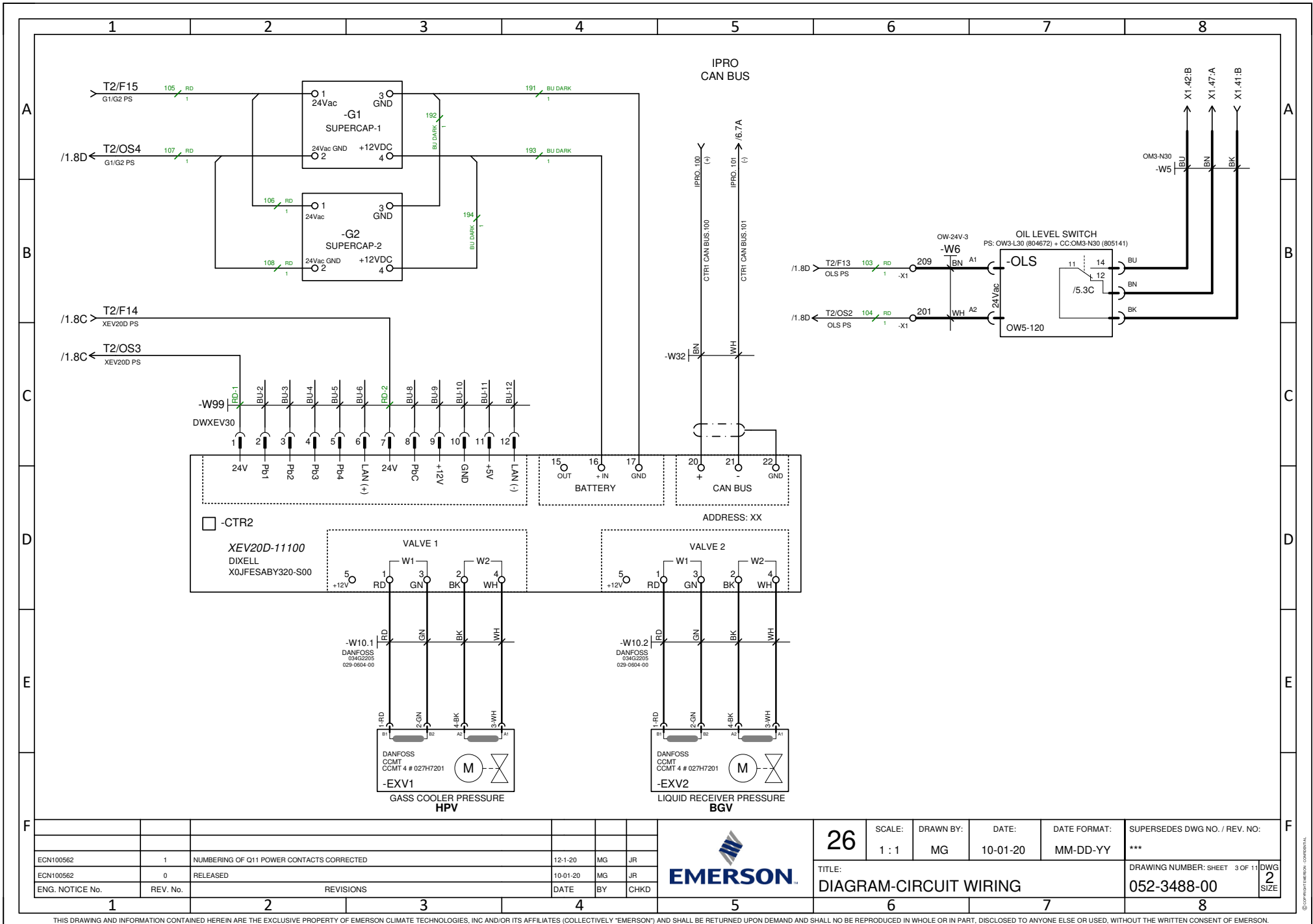


ZIEHLABEG
182714
FN071-ZIQ,DG.V7P3
550-0699-00

ENG. NOTICE No.	REV. No.	REVISIONS	DATE	BY	CHKD
ECN100562	1	NUMBERING OF Q11 POWER CONTACTS CORRECTED	12-1-20	MG	JR
ECN100562	0	RELEASED	10-01-20	MG	JR



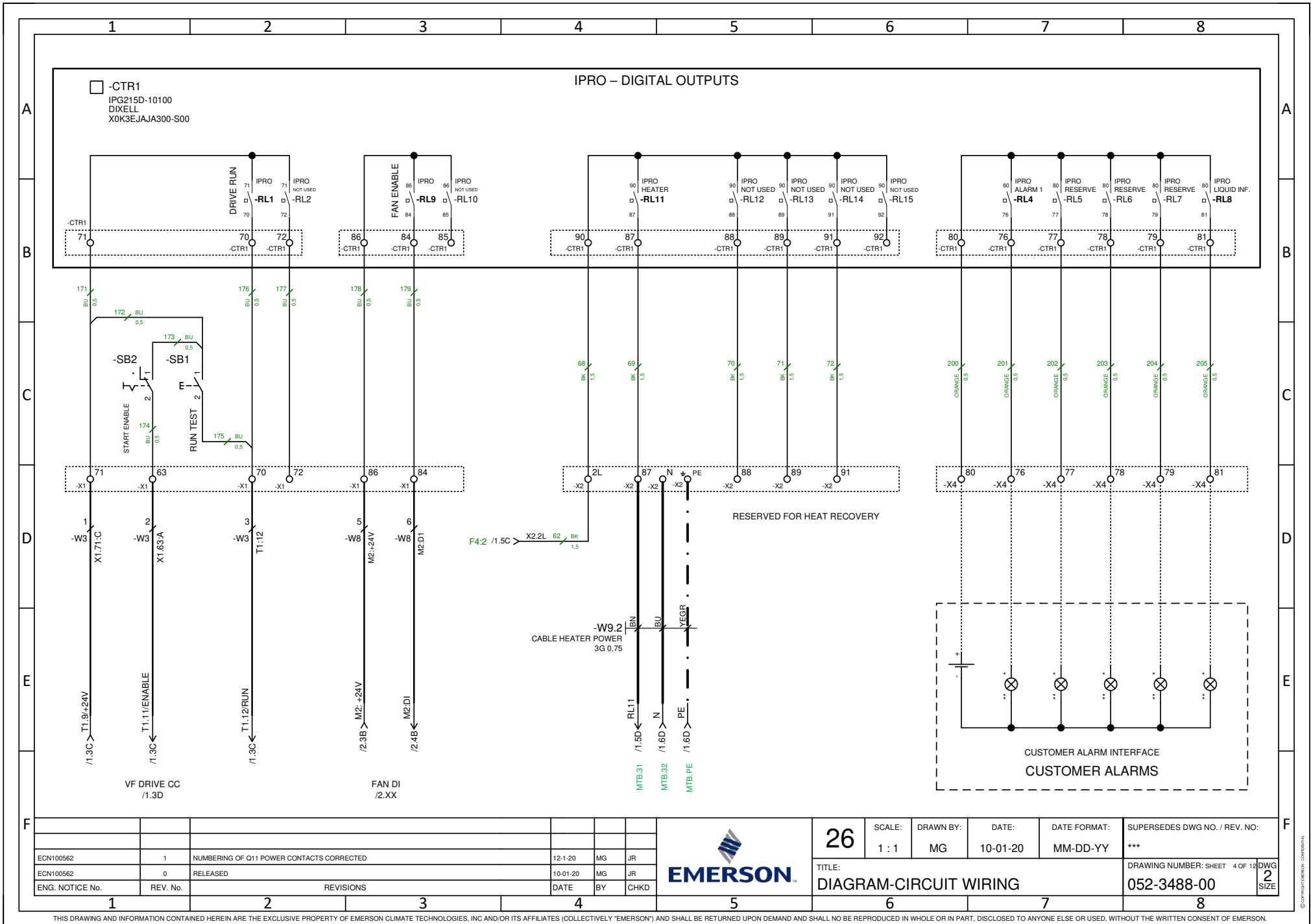
26	SCALE:	DRAWN BY:	DATE:	DATE FORMAT:	SUPERSEDES DWG NO. / REV. NO.:
	1 : 1	MG	10-01-20	MM-DD-YY	***
TITLE:					DRAWING NUMBER: SHEET 2 OF 12 DWG SIZE
DIAGRAM-CIRCUIT WIRING					052-3488-00 2



ECN100562	1	NUMBERING OF Q11 POWER CONTACTS CORRECTED	12-1-20	MG	JR
ECN100562	0	RELEASED	10-01-20	MG	JR
ENG. NOTICE No.	REV. No.	REVISIONS	DATE	BY	CHKD



26	SCALE:	DRAWN BY:	DATE:	DATE FORMAT:	SUPERSEDES DWG NO. / REV. NO.:
	1 : 1	MG	10-01-20	MM-DD-YY	***
TITLE:					DRAWING NUMBER: SHEET 3 OF 11 DWG SIZE
DIAGRAM-CIRCUIT WIRING					052-3488-00 2

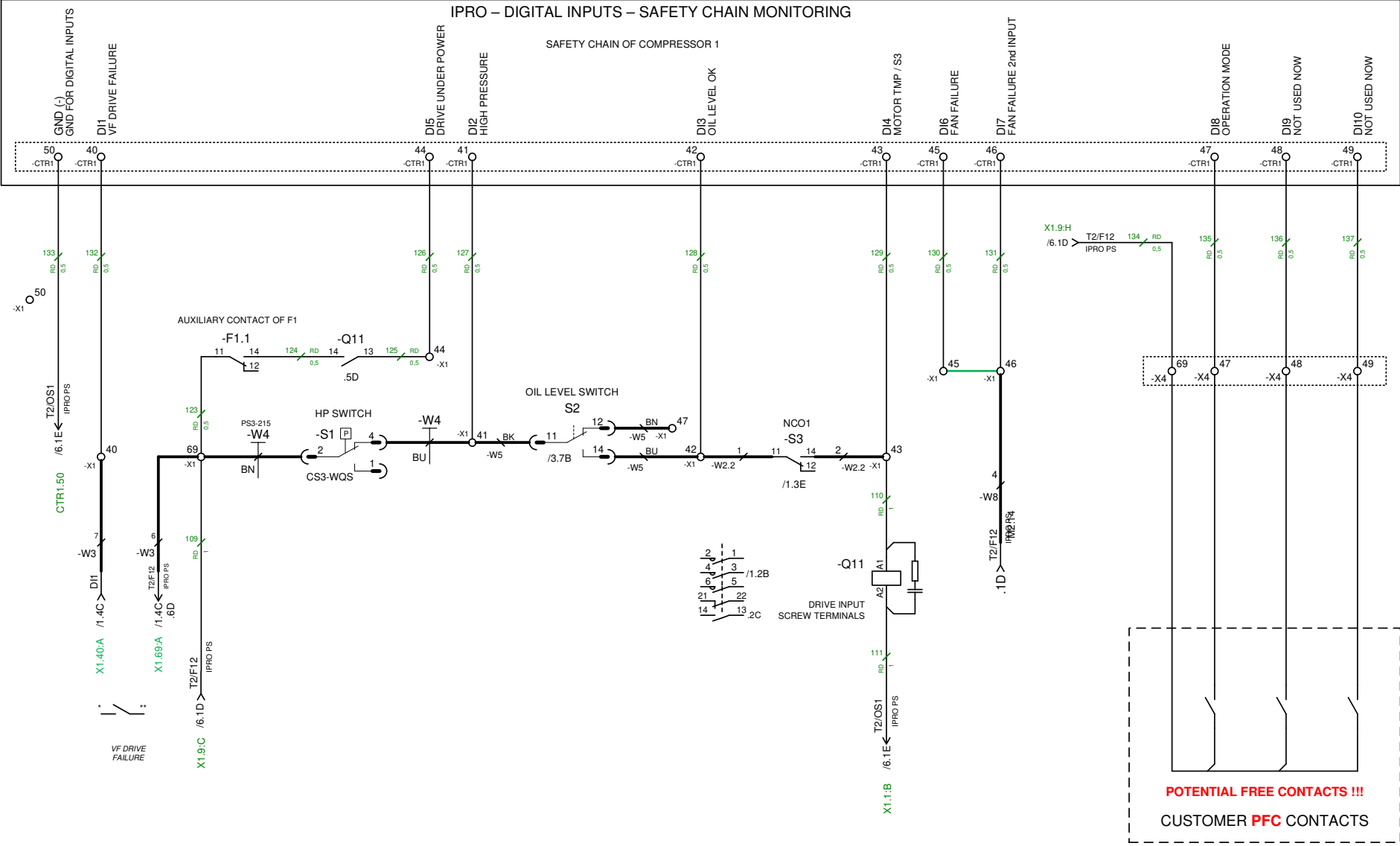


ENG. NOTICE No.	REV. No.	REVISIONS	DATE	BY	CHKD
ECN100562	1	NUMBERING OF Q11 POWER CONTACTS CORRECTED	12-1-20	MG	JR
ECN100562	0	RELEASED	10-01-20	MG	JR

	26	SCALE: 1 : 1	DRAWN BY: MG	DATE: 10-01-20	DATE FORMAT: MM-DD-YY	SUPERSEDES DWG NO. / REV. NO. ***
	TITLE: DIAGRAM-CIRCUIT WIRING					DRAWING NUMBER: SHEET 4 OF 12 052-3488-00

IPRO – DIGITAL INPUTS – SAFETY CHAIN MONITORING

SAFETY CHAIN OF COMPRESSOR 1

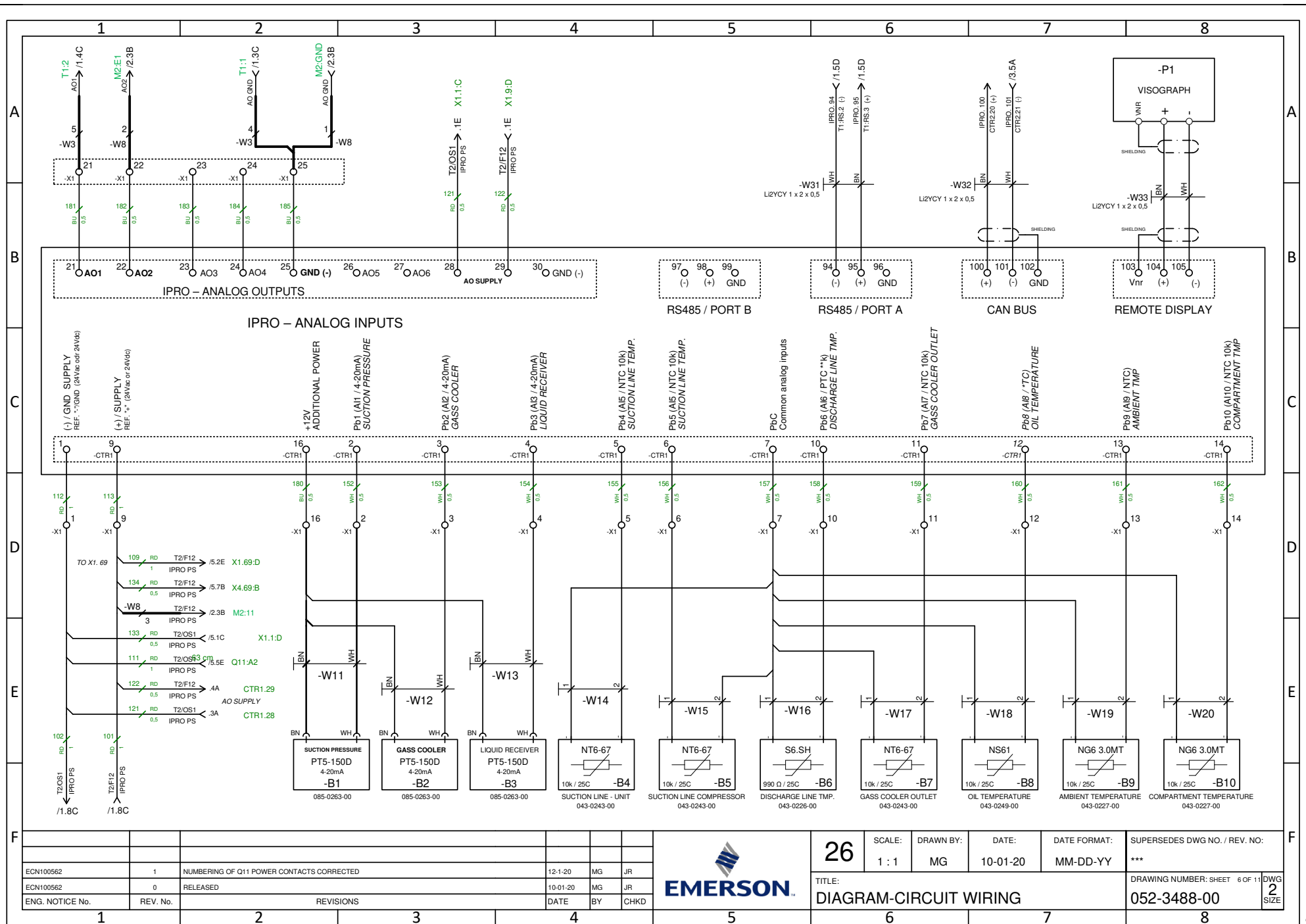



POTENTIAL FREE CONTACTS !!!
CUSTOMER PFC CONTACTS

ENG. NOTICE No.	REV. No.	REVISIONS	DATE	BY	CHKD
ECN100562	1	NUMBERING OF Q11 POWER CONTACTS CORRECTED	12-1-20	MG	JR
ECN100562	0	RELEASED	10-01-20	MG	JR



26	SCALE:	DRAWN BY:	DATE:	DATE FORMAT:	SUPERSEDES DWG NO. / REV. NO.:
	1 : 1	MG	10-01-20	MM-DD-YY	***
TITLE:					DRAWING NUMBER: SHEET 5 OF 11 DWG SIZE
DIAGRAM-CIRCUIT WIRING					052-3488-00 2



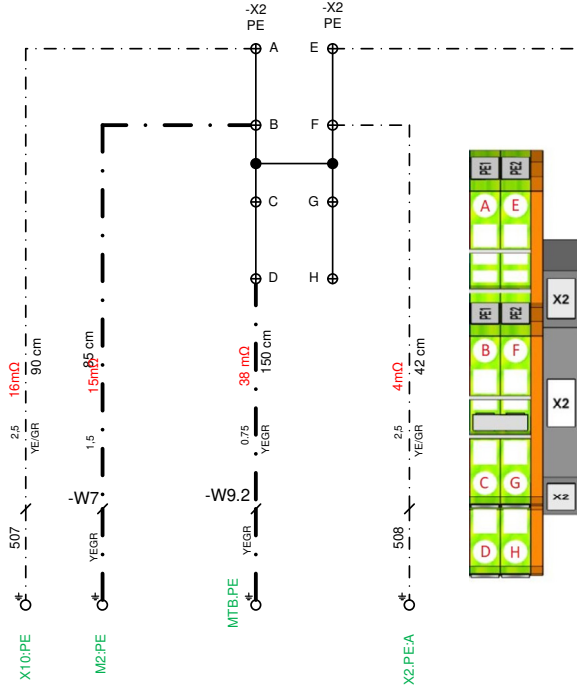
ECN100562		1	NUMBERING OF Q11 POWER CONTACTS CORRECTED	12-1-20	MG	JR	<div style="text-align: center;">  </div>	<div style="font-size: 2em; font-weight: bold;">26</div>	SCALE:	DRAWN BY:	DATE:	DATE FORMAT:	SUPERSEDES DWG NO. / REV. NO.:
ECN100562		0	RELEASED	10-01-20	MG	JR			1 : 1	MG	10-01-20	MM-DD-YY	***
ENG. NOTICE No.	REV. No.	REVISIONS		DATE	BY	CHKD			TITLE:		DIAGRAM-CIRCUIT WIRING		DRAWING NUMBER: SHEET 6 OF 11
		1		2	3	4	5	6	7	8	<div style="font-size: 1.2em; font-weight: bold;">052-3488-00</div>		<div style="font-size: 1.5em; font-weight: bold;">2</div>

OVERVIEW OF PE WIRES INCLUDING THEIR RESISTANCE

Before start of the functional test it is necessary to make steps for ensuring of machine safety condition to eliminate a risk of injury by electrical shock of technician who will perform the functional test.
 As basic machine protection against indirect contact in TN systems (*electrical shock by touching of conductive part in case of failure*) is **Automatic disconnection of supply**
 For correct functioning of this protection has to be checked bonding of all conductive parts (*where is possible risk of appearance of phase voltage in case of failure ...*)
 So has to be measured resistance of connection between each grounding point (marked by symbol IEC-519) and the terminal PE that is intended for connection of external protective conductor.

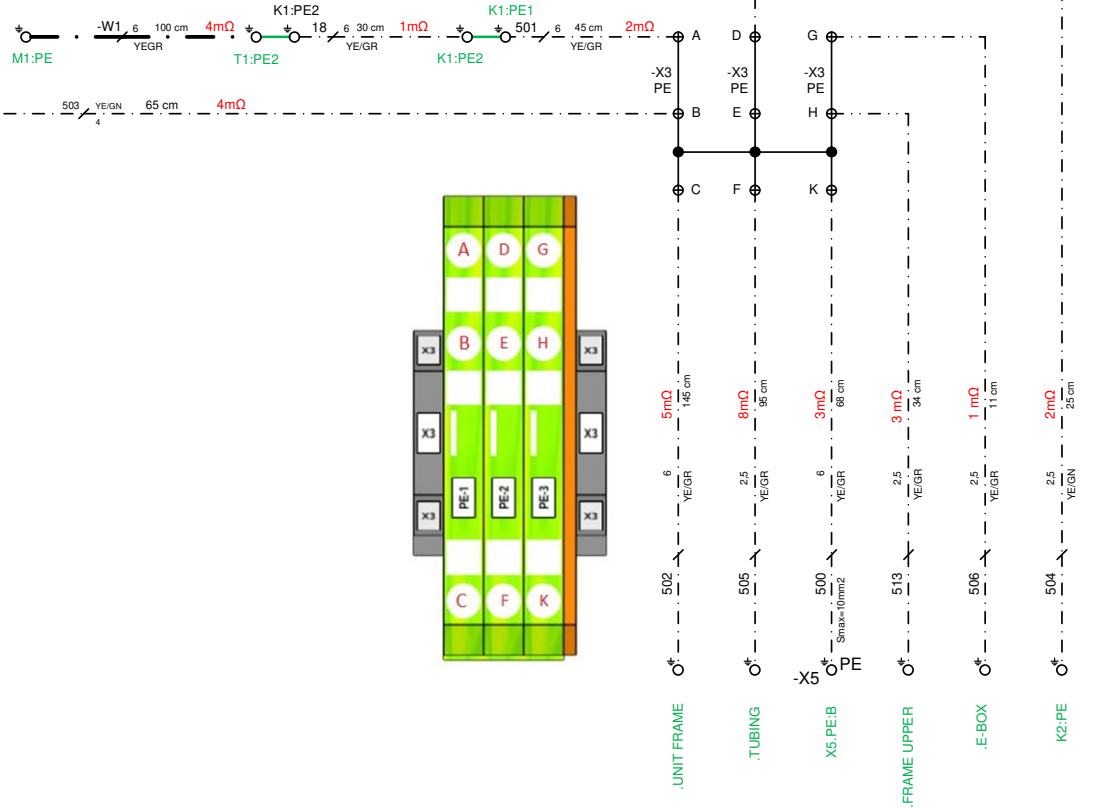
LEFT SIDE

PE TERMINAL BLOCK X2 (2.5mm²)



RIGHT SIDE

PE TERMINAL BLOCK X3 (6mm²)

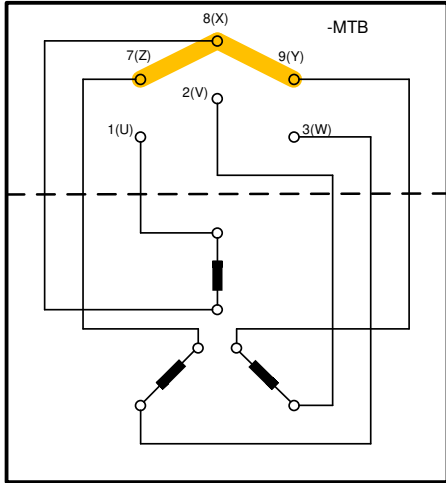
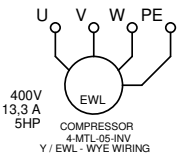
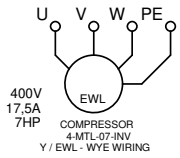
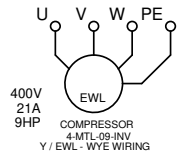
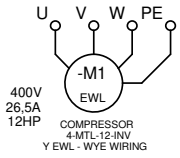


ENG. NOTICE No.	REV. No.	REVISIONS	DATE	BY	CHKD
ECN100562	1	NUMBERING OF Q11 POWER CONTACTS CORRECTED	12-1-20	MG	JR
ECN100562	0	RELEASED	10-01-20	MG	JR



26	SCALE: 1 : 1	DRAWN BY: MG	DATE: 10-01-20	DATE FORMAT: MM-DD-YY	SUPERSEDES DWG NO. / REV. NO.: ***
TITLE: DIAGRAM-CIRCUIT WIRING					DRAWING NUMBER: SHEET 7 OF 11 DWG SIZE 2
					052-3488-00

MOTOR TERMINAL BOX WIRING





ECN	REV. No.	DESCRIPTION	DATE	BY	CHKD
ECN100562	1	NUMBERING OF Q11 POWER CONTACTS CORRECTED	12-1-20	MG	JR
ECN100562	0	RELEASED	10-01-20	MG	JR
ENG. NOTICE No.	REV. No.	REVISIONS	DATE	BY	CHKD



26	SCALE:	DRAWN BY:	DATE:	DATE FORMAT:	SUPERSEDES DWG NO. / REV. NO.:
	1 : 1	MG	10-01-20	MM-DD-YY	***
TITLE:					DRAWING NUMBER: SHEET 8 OF 11 DWG SIZE
DIAGRAM-CIRCUIT WIRING					052-3488-00 2


ITEM	SYMBOL	PART	PART DESCRIPTION	SUPPLIER	SUPPLIER CODE	PART NUMBER	Remarks
1	-B1	PRESSURE TRANSDUCER	PT5-150D / 4-20mA	ALCO	#802 379	085-0263-00	SUCTION PRESSURE
2	-B2	PRESSURE TRANSDUCER	PT5-150D / 4-20mA	ALCO	#802 379	085-0263-00	GASS COOLER PRESSURE
3	-B3	PRESSURE TRANSDUCER	PT5-150D / 4-20mA	ALCO	#802 379	085-0263-00	LIQUID RECEIVER PRESSURE
4	-B4	THERMISTOR	NTC 10k	DIXELL	BN609003 05	043-0243-00	SUCTION LINE TMP - UNIT
5	-B5	THERMISTOR	NTC 10k	DIXELL	BN609003 05	043-0243-00	SUCTION LINE TMP. - COMPRESS...
6	-B6	THERMISTOR	PTC	DIXELL	BA161002 00	043-0226-00	DISCHARGE LINE TMP.
7	-B7	THERMISTOR	NTC 10k	DIXELL	BN609003 05	043-0243-00	GASS COOLER OUTLET TMP.
8	-B8	THERMISTOR	NTC	DIXELL	BN015002 00	043-0249-00	OIL TEMPERATURE
9	-B9	THERMISTOR	NTC 10k	DIXELL	BN607003 01	043-0227-00	AMBIENT TEMPERATURE
10	-B10	THERMISTOR	NTC 10k	DIXELL	BN607003 01	043-0227-00	COMPARTMENT TEMPERATURE
11	-CTR1	CONTROL UNIT	I PRO 215D-10DIN FORMAT	DIXELL	X0K3EJAJA300-S00	085-0274-00	---
12	-CTR2	DRIVER OF EXPANSION VALVES	XEV20D / TWO OUTPUTS	DIXELL	X0JFESABY320-S00	085-0288-00	---
13	-E1	CRANKCASE HEATER	COMPRESSOR	ECT	018-0109-03	018-0109-03	***
14	-EXV1	MOTOR	STEPPER MOTOR CCMT 4	DANFOSS	CCMT 4 # 027H7201	510-0907-00	Replaces previous version CX5 ...
15	-EXV2	MOTOR	STEPPER MOTOR CCMT 4	DANFOSS	CCMT 4 # 027H7201	510-0907-00	Replaces previous version CX5 ...
16	-F1	CIRCUIT BREAKER	3P 32A / C	SCHNEIDER ELECTRIC	A9F07332	071-0737-05	VF DRIVE POWER LINE
17	-F1.1	CIRCUIT BREAKER	AUXILIARY CONTACT	SCHNEIDER ELECTRIC	A9A26924	043-0207-00	MOUNTED ON SIDE OF F1
18	-F2	CIRCUIT BREAKER	1P 16A / C	SCHNEIDER ELECTRIC	A9F07116	071-0735-03	SOCKET FOR SERVICE
19	-F3	CIRCUIT BREAKER	1P+N 10A / C	SCHNEIDER ELECTRIC	A9F84610	043-0218-00	FAN
20	-F4	CIRCUIT BREAKER	1P 2A / C	SCHNEIDER ELECTRIC	A9F07102	071-0735-00	HEATER
21	-F5	CIRCUIT BREAKER	1P 2A / C	SCHNEIDER ELECTRIC	A9F07102	071-0735-00	CONTROL TRANSFORMER
22	-F6	CIRCUIT BREAKER	1P 6A / C	SCHNEIDER ELECTRIC	A9F07106	071-0735-01	WITH DOUBLE TERMINALS
23	-G1	BACKUP POWER SUPPLY	12VDC	DIXELL	X0SDABZZZ300-S00	043-0237-00	SUPERCAP BATTERY MODULE
24	-G2	BACKUP POWER SUPPLY	12VDC	DIXELL	X0SDABZZZ300-S00	043-0237-00	SUPERCAP BATTERY MODULE
25	-K1	EMC FILTER - NIDEC	3PH / VF DRIVE INPUT	NIDEC	4200 0402	012-0256-00	WIRES 10mm2; ground stud M6
26	-K2	EMC FILTER	1PH + N / CONTROL CIRC...	ELFIS	1ELF 16VY	012-0262-00	CONTROL CIRCUITS
27	-M1	MOTOR	Y /EWL	ECT	4-MTL-12-INV	495-****-00	UNIT : OME-4MTL-12X / 12HP
28	-M2	MOTOR	EC FAN	ZIEHLABEG	182714	550-0699-00	USED IN LOCU BASE AND ALSO I...
29	-MTB	MOTOR TERMINAL BOX	PART OF THE COMPRES...	ECT			
30	-OLS	OIL LEVEL MONITORING DEV...	---	ALCO	#805241	****	OIL LEVEL monitoring device with L...

ECN100562	1	NUMBERING OF Q11 POWER CONTACTS CORRECTED	12-1-20	MG	JR		26	SCALE:	DRAWN BY:	DATE:	DATE FORMAT:	SUPERSEDES DWG NO. / REV. NO.:
ECN100562	0	RELEASED	10-01-20	MG	JR			1:1	MG	10-01-20	MM-DD-YY	***
ENG. NOTICE No.	REV. No.	REVISIONS	DATE	BY	CHKD			TITLE:	DIAGRAM-CIRCUIT WIRING		DRAWING NUMBER: SHEET 9 OF 11	
										052-3488-00		2

1		2		3		4		5		6		7		8		
A	ITEM	SYMBOL	PART	PART DESCRIPTION	SUPPLIER	SUPPLIER CODE	PART NUMBER	Remarks								A
	31	-P1	VISOGRAPH	CONTROL PANEL	DIXELL	X0K8CBZAA910-S0A	085-0275-00									
	32	-Q01	MAIN SWITCH	VARIO	SCHNEIDER ELECTRIC	KIT EMERSON VARI...	543-0212-00	SET - MAIN SWITCH								
	33	-Q11	CONTACTOR	LC1 D32B7	SCHNEIDER ELECTRIC	LC1 D32B7	012-0259-01	UNIT : OME-4MTL-12X / 12HP								
	34	-RCD	RESIDUAL CURRENT DEVICE	2P 25A	SCHNEIDER ELECTRIC	A9Z11225	043-0241-00									
	35	-S1	PRESSURE SWITCH	HIGH PRESSURE - LIMIT	ALCO	#814007M	039-0039-01	(SPDT / NCO), REFRIGERANT R744								
	36	-S3	MONITORING DEVICE	WINDING TEMPERATURE	KRIWAN	22A263S021	071-0691-02	WINDING TEMPERATURE								
B	37	-SB1	TEST BUTTON - COMPRESSO...	PUSH BUTTON	SCHNEIDER ELECTRIC	A9E18032	043-0205-00									B
	38	-SB2	TOGGLE SWITCH	TOGGLE SWITCH TWO P...	SCHNEIDER ELECTRIC	A9E18070	043-0204-00									
	39	-T1	VF DRIVE	C200-05-4-00300-A	NIDEC	C200-05-4-00300-A	012-0255-01	12HP UNIT								
	40	-T2	TRANSFORMER - 230V / 4 x 24V	115VA: (25+25+45+20)	ELEKTROKOV ZNOJ...	JOC E2843-0521	037-0087-00	***								
	41	-X1	TERMINAL BLOCK	CONTROL CIRCUITS	SONEPAR / WAGO	080-0151-01-X1	080-0151-01	CONTROL CIRCUITS								
	42	-X2	TERMINAL BLOCK	FAN, HEATER, ... POWER	SONEPAR / WAGO	080-0151-02-X2	080-0151-02	FAN, HEATER, ...								
C	43	-X3	TERMINAL BLOCK	GROUNDING	SONEPAR / WAGO	080-0151-03-X3	080-0151-03	GROUNDING								C
	44	-X4	TERMINAL BLOCK	CUSTOMER ALARM INTE...	SONEPAR / WAGO	080-0151-01-X4	080-0151-04	CUSTOMER ALARM INTERFACE								
	45	-X5	TERMINAL BLOCK	CUSTOMER POWER CAB...	SONEPAR / WAGO	080-0151-01-X5	080-0151-05	FOR CUSTOMER POWER CABLE								
	46	-X10	SERVICE SOCKET 230V/6A	SCHUKO PE CONTACTS	SCHNEIDER ELECTRIC	A9A15310	080-0160-00	FOR SERVICE								
	47	E-BOX	GROUNDING POINT													
	48	E-BOX C...	GROUNDING POINT													
D	49	FRAME ...	GROUNDING POINT													D
	50	FRONT ...	GROUNDING POINT													
	51	LEFT CO...	GROUNDING POINT													
	52	RIGHT C...	GROUNDING POINT													
	53	TUBING	GROUNDING POINT													
E	54	UNIT FR...	GROUNDING POINT													E
F															F	
	ECN100562	1	NUMBERING OF Q11 POWER CONTACTS CORRECTED		12-1-20	MG	JR		26	SCALE:	DRAWN BY:	DATE:	DATE FORMAT:	SUPERSEDES DWG NO. / REV. NO.:		
	ECN100562	0	RELEASED		10-01-20	MG	JR			1: 1	MG	10-01-20	MM-DD-YY	***		
	ENG. NOTICE No.	REV. No.	REVISIONS		DATE	BY	CHKD			TITLE:			DRAWING NUMBER: SHEET 10 OF 11 DWG SIZE			
	1		2		3		4		5		6		7		8	
<small>THIS DRAWING AND INFORMATION CONTAINED HEREIN ARE THE EXCLUSIVE PROPERTY OF EMERSON CLIMATE TECHNOLOGIES, INC AND/OR ITS AFFILIATES (COLLECTIVELY "EMERSON") AND SHALL BE RETURNED UPON DEMAND AND SHALL NO BE REPRODUCED IN WHOLE OR IN PART, DISCLOSED TO ANYONE ELSE OR USED, WITHOUT THE WRITTEN CONSENT OF EMERSON.</small>																

© 2010 EMERSON. CONFIDENTIAL

Row	Designation	Comment	Description	PART NUMBER	Catalog Number	Length	Manufacturer	Contractor
1	-W1	W1	OELFLEX CLASSIC 100CY	529-0567-00	00350193	120 cm	LAPP	SPEL
2	-W2.1	CABLE KRIWAN POWER	H05 VV F 2x0,75	529-0323-00	00100214	150 cm	LAPP / SPEL	SPEL
3	-W2.2	CABLE KRIWAN OUTPUT	H05 VV F 2x0.75	529-0323-00	1119802	150 cm	LAPP / SPEL	SPEL
4	-W3	CABLE VF DRIVE CONTROL	H05 VV F 7x0.5	529-0325-00	1119757	110 cm	LAPP / SPEL	SPEL
5	-W4	CC HP SWITCH	CONTROL CABLE	529-0358-00	#804587	150 cm	ALCO	MKL
6	-W5	CC TRAXOIL OUTPUT, LLS LW4...	RELAY OUTPUT CABLE	029-0589-00	#805141	3 m	ALCO	MKL
7	-W6	PS OIL LEVEL SWITCH	CABLE	529-0327-00	#804672	3 m	ALCO	MKL
8	-W7	CABLE FAN POWER	OELFLEX ROBUST 200 3G1,5	529-0328-00	0021806	85 cm	LAPP / SPEL	SPEL
9	-W8	CABLE FAN CONTROL	OELFLEX ROBUST 210 (7X0,5)	529-0329-00	0221889	145 cm	LAPP / SPEL	SPEL
10	-W9.1	CABLE HEATER POWER	PART OF THE HEATER	018-0109-03		70 cm	ECT	MKL
11	-W9.2	CABLE HEATER POWER	H05 VV F 3x0,75	529-0323-00	00101254	150 cm	LAPP / SPEL	SPEL
12	-W10.1	CABLE EXPANSION VALVE	TWISTED PAIRS 2x 2x0.5	029-0604-00	034G2205	5 m	DANFOSS	MKL
13	-W10.2	CABLE EXPANSION VALVE	TWISTED PAIRS 2x 2x0.5	029-0604-00	034G2205	5 m	DANFOSS	MKL
14	-W11	CABLE-PROBE B1	4x 0,34mm2; PUR; M12FS	529-0333-00	22260322	2 m	LAPP / SPEL	SPEL
15	-W12	CABLE-PROBE B2	4x 0,34mm2; PUR; M12FS	529-0324-00	22260322	2 m	LAPP / SPEL	SPEL
16	-W13	CABLE-PROBE B3	4x 0,34mm2; PUR; M12FS	529-0357-00	22260322	2 m	LAPP / SPEL	SPEL
17	-W14	CABLE-PROBE B4	PART OF THE PROBE	NT6-67	BN609003 05		DIXELL	MKL
18	-W15	CABLE-PROBE B5	PART OF THE PROBE	NT6-67	BN609003 05		DIXELL	MKL
19	-W16	CABLE-PROBE B6	PART OF THE PROBE	S6.SH	BA161002 00		DIXELL	MKL
20	-W17	CABLE-PROBE B7	PART OF THE PROBE	NT6-67	BN609003 05		DIXELL	MKL
21	-W18	CABLE-PROBE B8	PART OF THE PROBE	NS61	BN015002 00		DIXELL	MKL
22	-W19	CABLE-PROBE B9	PART OF THE PROBE	NG6	BN607003 01		DIXELL	MKL
23	-W20	CABLE-PROBE B10	PART OF THE PROBE	NG6	BN607003 01		DIXELL	MKL
24	-W31	CABLE-RS IPRO-VF DRIVE	Li2YCY 1 x 2 x 0,5	529-0334-00	0031336		LAPP / SPEL	SPEL
25	-W32	CABLE-CAN BUS IPRO-XEV20D	Li2YCY 1 x 2 x 0,5	529-0335-00	0031336		LAPP / SPEL	SPEL
26	-W33	CABLE-IPRO-VISOGRAPH	Li2YCY 1 x 2 x 0,5	529-0336-00	0031336		LAPP / SPEL	SPEL
27	-W99	DWXEV30 / KIT	CABLE FOR XEV20D	529-0320-00	DD500603 00		DIXELL	MKL

ECN100562	1	NUMBERING OF Q11 POWER CONTACTS CORRECTED	12-1-20	MG	JR		26	SCALE:	DRAWN BY:	DATE:	DATE FORMAT:	SUPERSEDES DWG NO. / REV. NO.:
ECN100562	0	RELEASED	10-01-20	MG	JR			1:1	MG	10-01-20	MM-DD-YY	***
ENG. NOTICE No.	REV. No.	REVISIONS	DATE	BY	CHKD			TITLE: DIAGRAM-CIRCUIT WIRING				