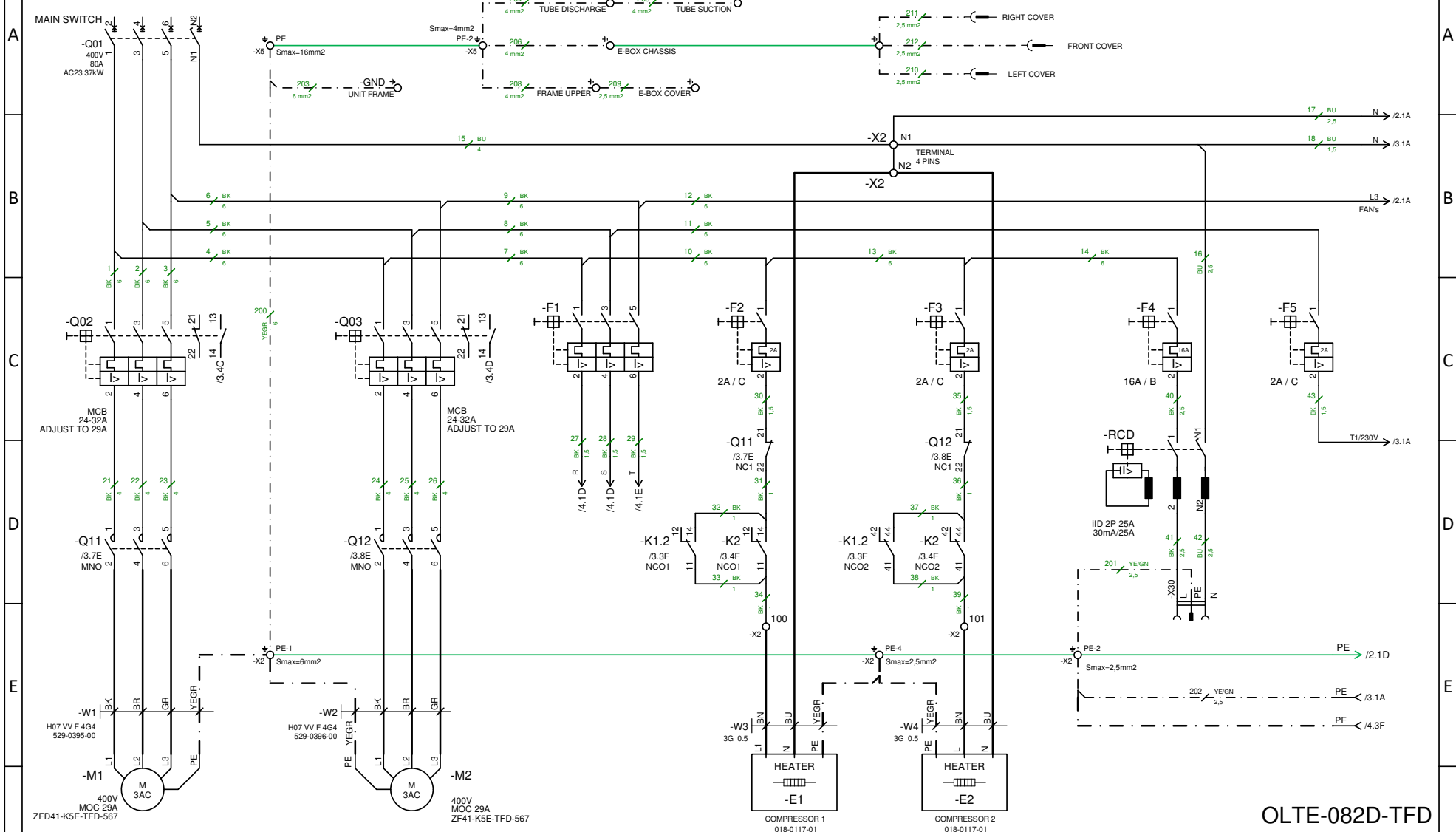


POWER SUPPLY 3x400/230V; N; PE; 50Hz

FOR CORRECT FUNCTION OF PROTECTION AGAINST INDIRECT CONTACT BY AUTOMATIC DISCONNECTION OF SUPPLY MAX. VALUE OF EARTH FAULT LOOP IMPEDANCE MUST BE:
 $Z_s \leq 0,4 \Omega$ (0,02 32A/D; Max. $Z_s = 0,44 \Omega$ for $t = 0,4s$)
 EN 60204-1 6.3.3; A1

I max. = 66A; min. Power cable 5G16mm2 min.

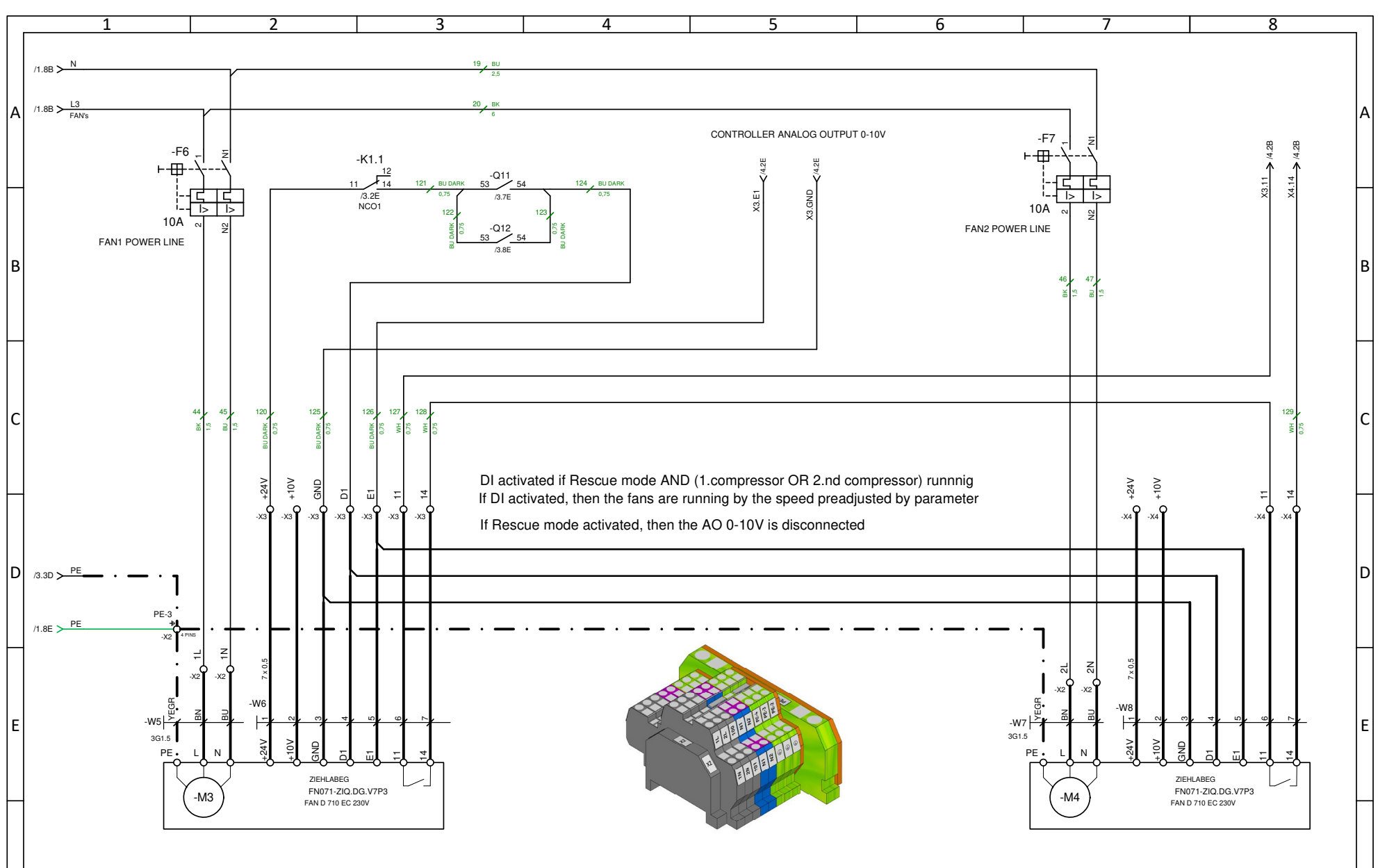


OLTE-082D-TFD

ECN305171	3	LIV / DGS - ADDITIONAL RELAY K20 IMPLEMENTED - PAGE 4	03-15-21	MG	MV
ECN305171	2	PROBES B1 AND B2 REPLACED BY SENSATA , WIRING OF CABLES W51; W52 CHANGED	09-09-20	MG	JR
ECN305171	1	MARKING OF CTR RELAY OUTPUTS CHANGED. NOTE ABOUT MAX. Zs ADDED	04-30-19	MG	JH
ECN305171	0	RELEASED	11-21-18	MG	JH
ENG. NOTICE No.	REV. No.	REVISIONS	DATE	BY	CHKD



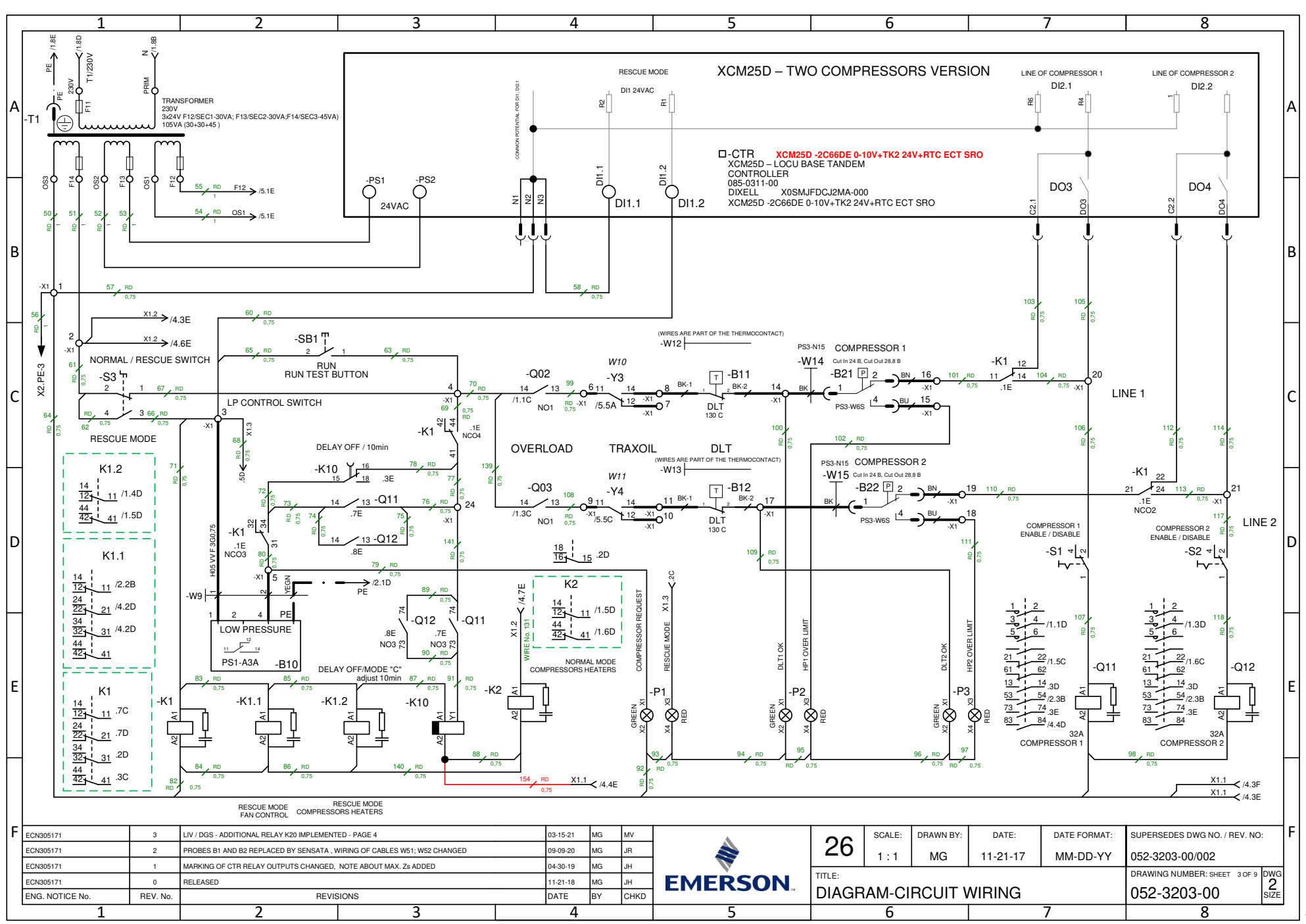
26	SCALE: 1 : 1	DRAWN BY: MG	DATE: 11-21-17	DATE FORMAT: MM-DD-YY	SUPERSEDES DWG NO. / REV. NO.: 052-3203-00/002
TITLE: DIAGRAM-CIRCUIT WIRING					DRAWING NUMBER: SHEET 1 OF 9
					DWG SIZE 2



ECN305171	3	LIV / DGSS - ADDITIONAL RELAY K20 IMPLEMENTED - PAGE 4	03-15-21	MG	MV
ECN305171	2	PROBES B1 AND B2 REPLACED BY SENSATA , WIRING OF CABLES W51; W52 CHANGED	09-09-20	MG	JR
ECN305171	1	MARKING OF CTR RELAY OUTPUTS CHANGED. NOTE ABOUT MAX. Zs ADDED	04-30-19	MG	JH
ECN305171	0	RELEASED	11-21-18	MG	JH
ENG. NOTICE No.	REV. No.	REVISIONS	DATE	BY	CHKD




26	SCALE: 1 : 1	DRAWN BY: MG	DATE: 11-21-17	DATE FORMAT: MM-DD-YY	SUPERSEDES DWG NO. / REV. NO.: 052-3203-00/002
TITLE: DIAGRAM-CIRCUIT WIRING					DRAWING NUMBER: SHEET 2 OF 9
					DWG SIZE 2

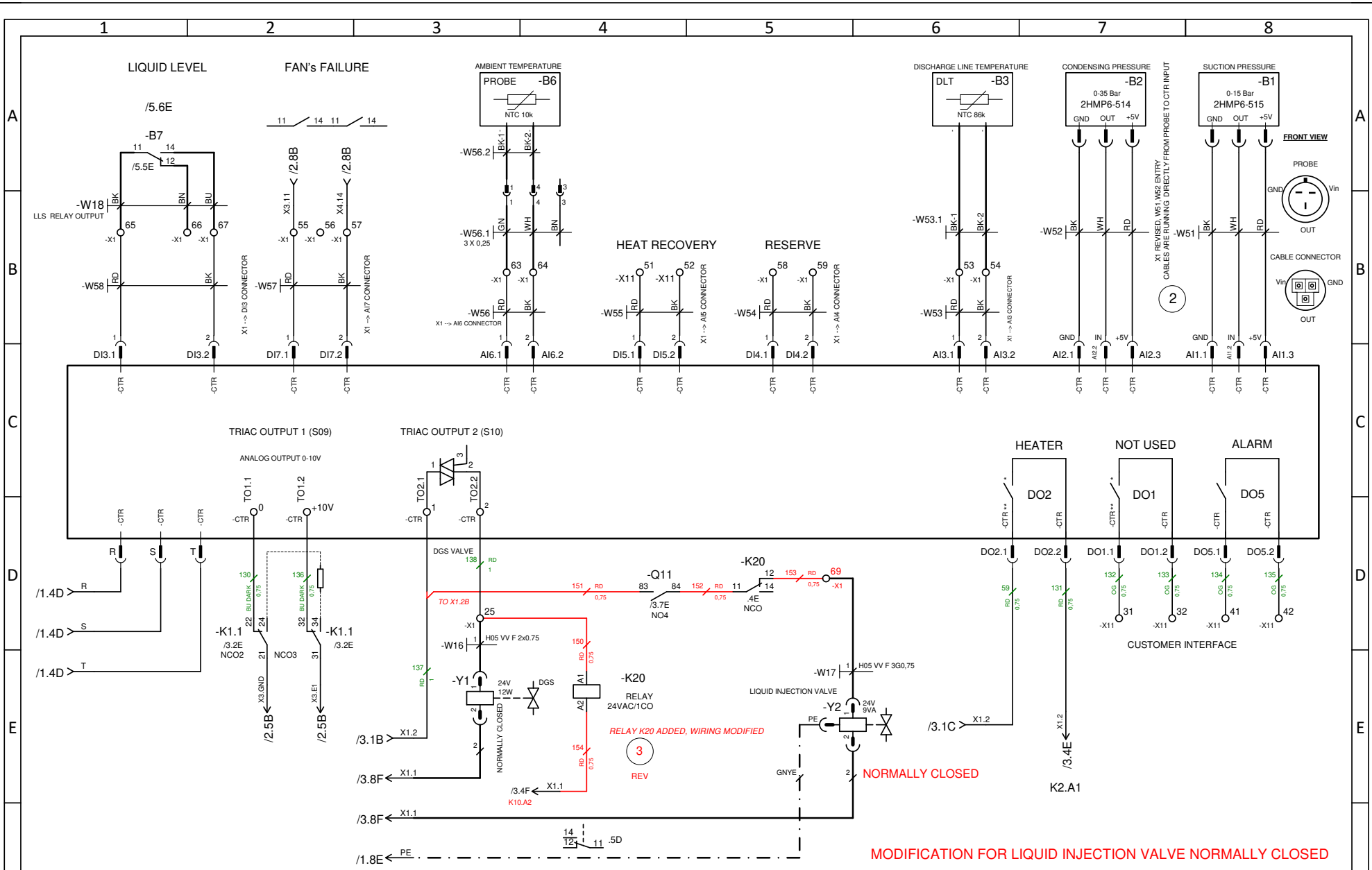


XCM25D - TWO COMPRESSORS VERSION

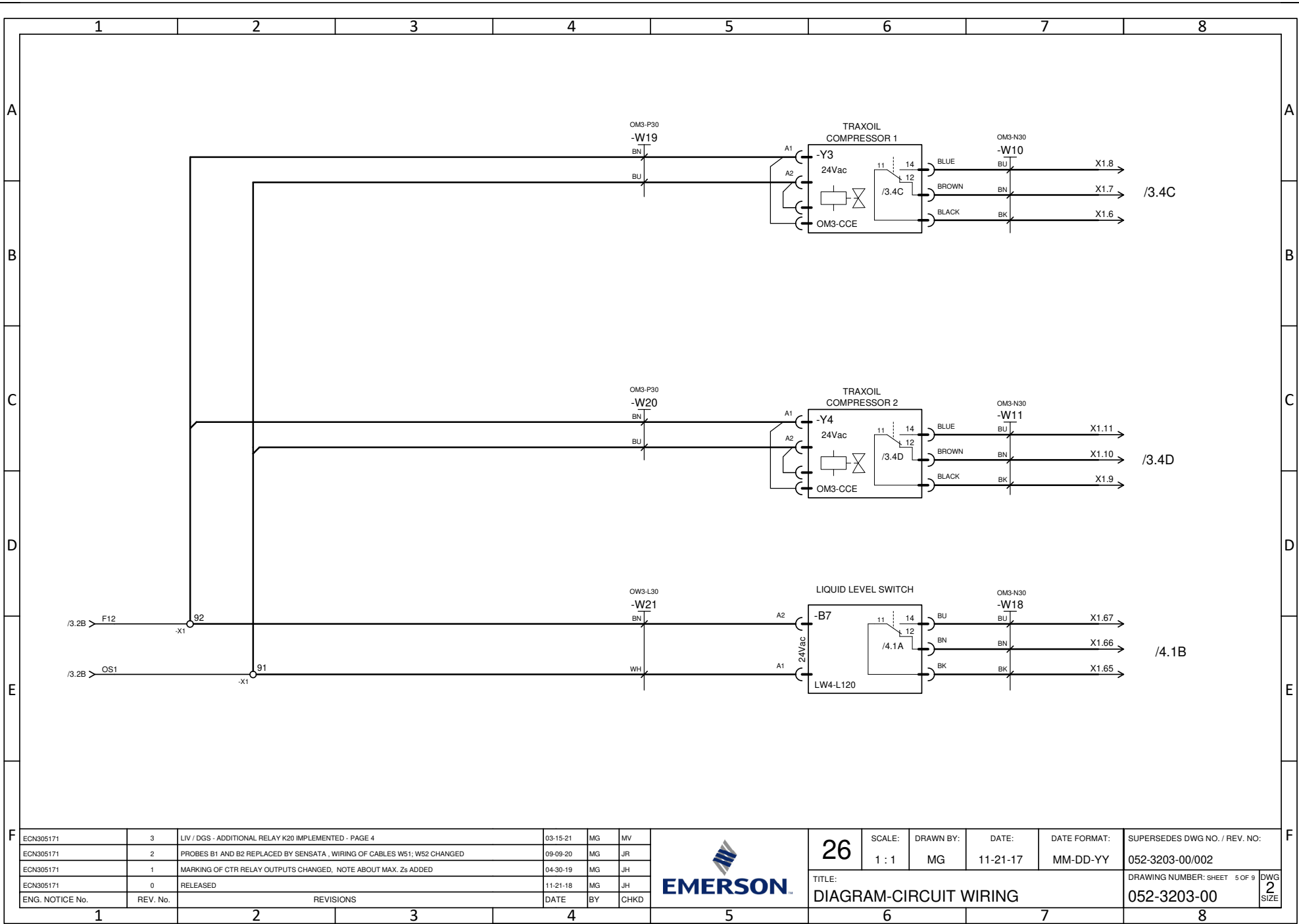
□ -CTR **XCM25D -2C66DE 0-10V+TK2 24V+RTC ECT SRO**
 XCM25D - LOCU BASE TANDEM
 CONTROLLER
 085-0311-00
 DIXELL X0SMJFDCJ2MA-000
 XCM25D -2C66DE 0-10V+TK2 24V+RTC ECT SRO

ECN305171	3	LIV / DSS - ADDITIONAL RELAY K20 IMPLEMENTED - PAGE 4	03-15-21	MG	MV	<div style="text-align: center;">  </div>	<div style="text-align: center; font-size: 2em; font-weight: bold;">26</div>	SCALE:	1 : 1	DRAWN BY:	MG	DATE:	11-21-17	DATE FORMAT:	MM-DD-YY	SUPERSEDES DWG NO. / REV. NO.:	052-3203-00/002	
ECN305171	2	PROBES B1 AND B2 REPLACED BY SENSATA , WIRING OF CABLES W51; W52 CHANGED	09-09-20	MG	JR			TITLE:	DIAGRAM-CIRCUIT WIRING									
ECN305171	1	MARKING OF CTR RELAY OUTPUTS CHANGED. NOTE ABOUT MAX. Zs ADDED	04-30-19	MG	JH			DRAWING NUMBER: SHEET	3 OF 9	DWG	2							
ECN305171	0	RELEASED	11-21-18	MG	JH			052-3203-00										
ENG. NOTICE No.	REV. No.	REVISIONS	DATE	BY	CHKD													

THIS DRAWING AND INFORMATION CONTAINED HEREIN ARE THE EXCLUSIVE PROPERTY OF EMERSON CLIMATE TECHNOLOGIES, INC AND/OR ITS AFFILIATES (COLLECTIVELY "EMERSON") AND SHALL BE RETURNED UPON DEMAND AND SHALL NO BE REPRODUCED IN WHOLE OR IN PART, DISCLOSED TO ANYONE ELSE OR USED, WITHOUT THE WRITTEN CONSENT OF EMERSON.



ECN305171	3	LIV / DGS - ADDITIONAL RELAY K20 IMPLEMENTED - PAGE 4	03-15-21	MG	MV		26	SCALE:	DRAWN BY:	DATE:	DATE FORMAT:	SUPERSEDES DWG NO. / REV. NO.:
ECN305171	2	PROBES B1 AND B2 REPLACED BY SENSATA, WIRING OF CABLES W51; W52 CHANGED	09-09-20	MG	JR			1 : 1	MG	11-21-17	MM-DD-YY	052-3203-00/002
ECN305171	1	MARKING OF CTR RELAY OUTPUTS CHANGED, NOTE ABOUT MAX. Zs ADDED	04-30-19	MG	JH			TITLE:				DRAWING NUMBER: SHEET 4 OF 9
ECN305171	0	RELEASED	11-21-18	MG	JH			DIAGRAM-CIRCUIT WIRING				DWG SIZE
ENG. NOTICE No.	REV. No.	REVISIONS	DATE	BY	CHKD							052-3203-00

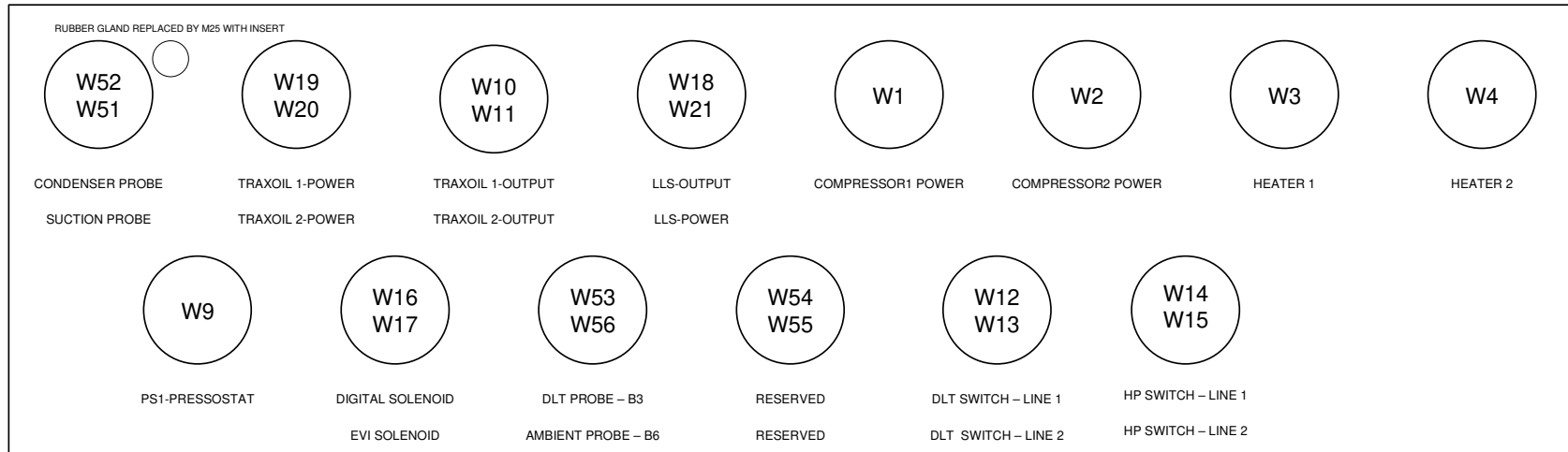


ECN305171	REV. No.	REVISIONS	DATE	BY	CHKD
ECN305171	3	LIV / DGS - ADDITIONAL RELAY K20 IMPLEMENTED - PAGE 4	03-15-21	MG	MV
ECN305171	2	PROBES B1 AND B2 REPLACED BY SENSATA , WIRING OF CABLES W51; W52 CHANGED	09-09-20	MG	JR
ECN305171	1	MARKING OF CTR RELAY OUTPUTS CHANGED. NOTE ABOUT MAX. Zs ADDED	04-30-19	MG	JH
ECN305171	0	RELEASED	11-21-18	MG	JH

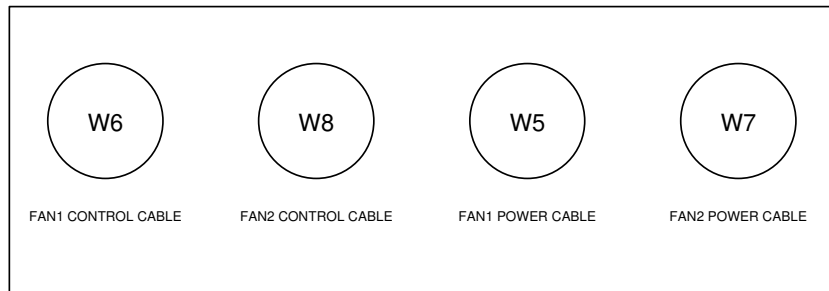


26	SCALE:	DRAWN BY:	DATE:	DATE FORMAT:	SUPERSEDES DWG NO. / REV. NO.:
	1 : 1	MG	11-21-17	MM-DD-YY	052-3203-00/002
TITLE:					DRAWING NUMBER: SHEET 5 OF 9
DIAGRAM-CIRCUIT WIRING					052-3203-00
					DWG SIZE: 2

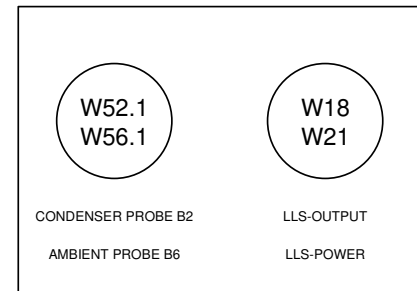
CABLE ENTRIES ARRANGEMENT E-BOX BOTTOM



FANS CABLE ENTRIES ARRANGEMENT E-BOX LEFT UPPER CORNER



CABLE ENTRIES ARRANGEMENT COMPRESSOR COMPARTMENT BOTTOM LEFT




ECN305171	3	LIV / DGS - ADDITIONAL RELAY K20 IMPLEMENTED - PAGE 4	03-15-21	MG	MV		26	SCALE:	DRAWN BY:	DATE:	DATE FORMAT:	SUPERSEDES DWG NO. / REV. NO.:
ECN305171	2	PROBES B1 AND B2 REPLACED BY SENSATA , WIRING OF CABLES W51; W52 CHANGED	09-09-20	MG	JR			1 : 1	MG	11-21-17	MM-DD-YY	052-3203-00/002
ECN305171	1	MARKING OF CTR RELAY OUTPUTS CHANGED. NOTE ABOUT MAX. Zs ADDED	04-30-19	MG	JH							
ECN305171	0	RELEASED	11-21-18	MG	JH							
ENG. NOTICE No.	REV. No.	REVISIONS	DATE	BY	CHKD			TITLE: DIAGRAM-CIRCUIT WIRING			DRAWING NUMBER: SHEET 6 OF 9 052-3203-00	DWG 2 SIZE

		1	2	3	4	5	6	7	8			
Row	Designation	Comment		Type Designation	PART NUMBER	Length	Remarks					
A	1	-W1	COMPRESSOR1 POWER	H07 VV F 4G4	529-0395-00	160 cm						
	2	-W2	COMPRESSOR2 POWER	H07 VV F 4G4	529-0396-00	179 cm						
	3	-W3	HEATER 1	3G 0.5	529-0397-00	124 cm	CABLE IS PART OF THE HEATER					
	4	-W4	HEATER 2	3G 0.5	529-0398-00	124 cm	CABLE IS PART OF THE HEATER					
	5	-W5	FAN1 POWER	3G1.5	529-0399-00	121 cm						
B	6	-W6	FAN1 CONTROL CABLE	7 x 0,5	529-0400-00	122 cm						
	7	-W7	FAN2 POWER	3G1.5	529-0401-00	220 cm						
	8	-W8	FAN CONTROL CABLE	7 x 0,5	529-0402-00	218 cm						
	9	-W9	CONTROL CABLE PRESSOSTAT	H05 VV F 3G0,75	529-0403-00	131 cm						
	10	-W10	TRAXOIL1 RELAY OUTPUT	OM3-N30	529-0404-00	201 cm						
	11	-W11	TRAXOIL2 RELAY OUTPUT	OM3-N30	529-0405-00	248 cm						
	12	-W12	DLT THERMOCONTACT 1	(WIRES ARE PART OF THE T...	529-0406-00	88 cm	WIRES ARE PART OF THE SWITCH					
	13	-W13	DLT THERMOCONTACT 2	(WIRES ARE PART OF THE T...	529-0407-00	88 cm	WIRES ARE PART OF THE SWITCH					
C	14	-W14	HP SWITCH LINE1	PS3-N15	529-0408-00	113 cm	SPDT / NCO					
	15	-W15	HP SWITCH LINE 2	PS3-N15	529-0409-00	126 cm	SPDT / NCO					
	16	-W16	DGS VALVE	H05 VV F 2x0.75	529-0410-00	220 cm						
	17	-W17	Y2 EVI	H05 VV F 3G0,75	529-0411-00	167 cm						
	18	-W18	LLS RELAY OUTPUT	OM3-N30	529-0412-00	218 cm						
D	19	-W19	TRAXOIL 1 POWER	OM3-P30	529-0413-00	203 cm						
	20	-W20	TRAXOIL 2 POWER	OM3-P30	529-0414-00	268 cm						
	21	-W21	LIQUID LEVEL MONITORING POWER	OW3-L30	529-0415-00	217 cm						
	22	-W51	SENSATA PROBE CABLE	RD,BK,WH; XLPE	529-0555-01	290 cm						
	23	-W52	SENSATA PROBE CABLE	RD,BK,WH; XLPE	529-0556-01	400 cm						
	24	-W53	DLT PROBE	X1 --> AI3 CONNECTOR	529-0422-00	40 cm	INTERNAL WIRING: CTR INPUT AI3 -->X1					
	25	-W53.1	CC B3 DLT	NTC 86k / 043-0200-01	529-0423-00	90 cm	PROBE 3 --> X1					
E	26	-W54	DI4	X1 --> AI4 CONNECTOR	529-0424-00	40 cm	INTERNAL WIRING: CTR INPUT AI4 -->X1					
	27	-W55	DI5	X1 --> AI5 CONNECTOR	529-0425-00	50 cm	INTERNAL WIRING: CTR INPUT AI5 -->X1					
	28	-W56	AI6	X1 --> AI6 CONNECTOR	529-0426-00	40 cm	INTERNAL WIRING: CTR INPUT AI6 -->X1					
	29	-W56.1	AMBIENT PROBE B6 - 2	UNITRONIC LiYY 3x0.25	529-0427-00	182 cm	X1-->CONNECTOR X56-FEMALE					
	30	-W56.2	AMBIENT PROBE B6 - 3	B6 / 043-0198-00 -->X56.2 MALE	529-0428-00	20 cm	PROBE B6 --> CONNECTOR X56 MALE					
	31	-W57	DI7	X1 --> AI7 CONNECTOR	529-0429-00	40 cm	INTERNAL WIRING: CTR INPUT AI7 -->X1					
	32	-W58	DI3	X1 --> DI3 CONNECTOR	529-0430-00	40 cm	INTERNAL WIRING: CTR INPUT DI3 -->X1					
F	ECN305171	3	LIV / DGS - ADDITIONAL RELAY K20 IMPLEMENTED - PAGE 4	03-15-21	MG	MV						
	ECN305171	2	PROBES B1 AND B2 REPLACED BY SENSATA , WIRING OF CABLES W51; W52 CHANGED	09-09-20	MG	JR						
	ECN305171	1	MARKING OF CTR RELAY OUTPUTS CHANGED. NOTE ABOUT MAX. Zs ADDED	04-30-19	MG	JH						
	ECN305171	0	RELEASED	11-21-18	MG	JH						
	ENG. NOTICE No.	REV. No.	REVISIONS	DATE	BY	CHKD						
	1	2	3	4	5	6	7	8				
							26	SCALE: 1:1	DRAWN BY: MG	DATE: 11-21-17	DATE FORMAT: MM-DD-YY	SUPERSEDES DWG NO. / REV. NO: 052-3203-00/002
							EMERSON	TITLE: DIAGRAM-CIRCUIT WIRING			DRAWING NUMBER: SHEET 7 OF 9	DWG SIZE 2
											052-3203-00	

1 2 3 4 5 6 7 8

LEGEND


ITEM	SYMBOL	PART	PART DESCRIPTION	SUPPLIER	SUPPLIER CODE	PART NUMBER	Remarks
1	-B1	PRESSURE TRANSD...	0-15 Bar	SENSATA	2HMP6-515	085-0329-00	
2	-B2	PRESSURE TRANSD...	0-35 Bar	SENSATA	2HMP6-514	085-0330-00	
3	-B3	THERMISTOR	DISCHARGE TEMPERATURE	DIXELL	#	043-0200-01	
4	-B6	THERMISTOR	AMBIENT TEMPERATURE	DIXELL	#	043-0198-00	
5	-B7	MONITORING DEVICE	LIQUID LEVEL	ALCO	#805490	085-0300-00	
6	-B10	PRESSURE SWITCH	LP CONTROL SWITCH	ALCO	# 4370700	085-7049-00	ADJUSTABLE - FOR RESCUE MODE
7	-B11	THERMOCONTACT	DISCHARGE LINE -1	EMERSON		085-0227-00	
8	-B12	THERMOCONTACT	DISCHARGE LINE -1	EMERSON		085-0227-00	
9	-B21	PRESSURE SWITCH	HIGH PRESSURE LIMIT	ALCO	#715696	039-0029-00	
10	-B22	PRESSURE SWITCH	HIGH PRESSURE - LIMIT	ALCO	#715696	039-0029-00	
11	-CTR	CONTROLLER	XCM25D – LOCU BASE TANDEM	DIXELL	XCM25D -2C66DE ...	085-0311-00	XCM25D -2C66DE 0-10V+TK2 24V+RTC ...
12	-E1	HEATER	COMPRESSOR 1 CRANKCASE	ECT	018-0117-01	018-0117-01	
13	-E2	HEATER	COMPRESSOR 2 CRANKCASE	ECT	018-0117-01	018-0117-01	
14	-F1	CIRCUIT BREAKER	RST CTR INPUTS - 2A / B	SCHNEIDER ELECTRIC	A9F73302	043-0263-00	
15	-F2	CIRCUIT BREAKER	HEATER 1 - 2A / C	SCHNEIDER ELECTRIC	A9F84102	043-0208-00	
16	-F3	CIRCUIT BREAKER	HEATER 2 - 2A / C	SCHNEIDER ELECTRIC	A9F84102	043-0208-00	
17	-F4	CIRCUIT BREAKER	SOCKET 230V - 16A / B	SCHNEIDER ELECTRIC	A9F83116	043-0228-00	FOR SERVICE
18	-F5	CIRCUIT BREAKER	CONTROL TRANSFORMER - 2A / C	SCHNEIDER ELECTRIC	A9F84102	043-0208-00	
19	-F6	CIRCUIT BREAKER	POWER LINE FAN1 - 1P+N 10A / C	SCHNEIDER ELECTRIC	A9F84610	043-0218-00	
20	-F7	CIRCUIT BREAKER	POWER LINE FAN2 - 1P+N 10A / C	SCHNEIDER ELECTRIC	A9F84610	043-0218-00	
21	-K1	RELAY	RESCUE MODE	SCHNEIDER ELECTRIC	RXM4AB2B7	040-0212-00	
22	-K1.1	RELAY	RESCUE MODE	SCHNEIDER ELECTRIC	RXM4AB2B7	040-0212-00	
23	-K1.2	RELAY	24Vac; 2 NCO; with LED	SCHNEIDER ELECTRIC	RXM2AB2B7	040-0211-00	
24	-K2	RELAY	HEATERS NORMAL MODE	SCHNEIDER ELECTRIC	RXM2AB2B7	040-0211-00	
25	-K10	MULTIFUNCTIONAL R...	24-230Vac / 1NCO	SCHNEIDER ELECTRIC	RE17RMMU	040-0199-00	Multifunctional relay 1x NCO contact 8A
26	-K20	RELAY	EVI/DGS	SCHNEIDER ELECTRIC	RSB1A120B7S	040-0223-00	IF DGS ACTIVATED, LI VALVE IS CLOSED
27	-M1	MOTOR	COMPRESSOR	ECT	ZFD41-K5E-TFD-567	497-0910-03	DIGITAL compressor
28	-M2	MOTOR	COMPRESSOR	ECT	ZF41-K5E-TFD-567	497-0910-01	ON / OFF compressor
29	-M3	MOTOR	EC FAN	ZIEHLABEG	FN071-ZIQ.DG.V7P3	550-0699-00	FAN 1

ECN305171	3	LIV / DGS - ADDITIONAL RELAY K20 IMPLEMENTED - PAGE 4	03-15-21	MG	MV		26	SCALE:	DRAWN BY:	DATE:	DATE FORMAT:	SUPERSEDES DWG NO. / REV. NO.:
ECN305171	2	PROBES B1 AND B2 REPLACED BY SENSATA , WIRING OF CABLES W51; W52 CHANGED	09-09-20	MG	JR			1: 1	MG	11-21-17	MM-DD-YY	052-3203-00/002
ECN305171	1	MARKING OF CTR RELAY OUTPUTS CHANGED. NOTE ABOUT MAX. Zs ADDED	04-30-19	MG	JH							
ECN305171	0	RELEASED	11-21-18	MG	JH							
ENG. NOTICE No.	REV. No.	REVISIONS	DATE	BY	CHKD	DIAGRAM-CIRCUIT WIRING		DRAWING NUMBER: SHEET 8 OF 9		DWG SIZE 2		

1 2 3 4 5 6 7 8

LEGEND

ITEM	SYMBOL	PART	PART DESCRIPTION	SUPPLIER	SUPPLIER CODE	PART NUMBER	Remarks
30	-M4	MOTOR	EC FAN	ZIEHLABEG	FN071-ZIQ.DG.V7P3	550-0699-00	FAN 2
31	-P1	SIGNAL LAMP	RED =RESCUE MODE;	SCHNEIDER ELECTRIC	A9E18335	039-0052-00	
32	-P2	SIGNAL LAMP	GREEN = B11 CLOSED;	SCHNEIDER ELECTRIC	A9E18335	039-0052-00	
33	-P3	SIGNAL LAMP	GREEN = B12 CLOSED;	SCHNEIDER ELECTRIC	A9E18335	039-0052-00	
34	-Q01	MAIN SWITCH	INTERPACT INS80 - 4P	SCHNEIDER ELECTRIC	28921	543-0287-00	
35	-Q02	MCB	1. COMPRESSOR / 24-32A	SCHNEIDER ELECTRIC	GV2 ME32	071-0726-00	ADJUST TO 29A
36	-Q03	MCB	2. COMPRESSOR / 24-32A	SCHNEIDER ELECTRIC	GV2 ME32	071-0726-00	ADJUST TO 29A
37	-Q11	CONTACTOR	LC1 D32B7	SCHNEIDER ELECTRIC	LC1 D32B7	012-0259-01	
38	-Q12	CONTACTOR	LC1 D32B7	SCHNEIDER ELECTRIC	LC1 D32B7	012-0259-01	
39	-RCD	RCD	SERVICE SOCKET PROTECTION	SCHNEIDER ELECTRIC	A9Z11225	043-0241-00	
40	-S1	TOOGLE SWITCH	DISABLING OF 1. COMPRESSOR	SCHNEIDER ELECTRIC	A9E18070	043-0204-00	
41	-S2	TOOGLE SWITCH	DISABLING OF 2. COMPRESSOR	SCHNEIDER ELECTRIC	A9E18070	043-0204-00	
42	-S3	ROTARY SWITCH	NORMAL / RESCUE MODE SWITCHI...	SCHNEIDER ELECTRIC	A9E15122	043-0262-00	
43	-SB1	PUSH BUTTON	TEST BUTTON - COMPRESSOR RUN	SCHNEIDER ELECTRIC	A9E18032	043-0205-00	
44	-T1	TRANSFORMER	CONTROL CIRCUITS	ELEKTROKOV ZNOJMO	JOC E2838-0095	037-0044-00	
45	-X1	TERMINAL BLOCK	CONTROL CIRCUITS	SONEPAR / WAGO	080-0169-01/001	080-0169-01/...	REVISED
46	-X2	TERMINAL BLOCK	FAN's POWER	SONEPAR / WAGO	080-0169-02	080-0169-02	
47	-X3	TERMINAL BLOCK	FAN's CONTROL CIRCUIT	SONEPAR / WAGO	080-0169-03	080-0169-03	
48	-X4	TERMINAL BLOCK	FAN's CONTROL CIRCUIT	SONEPAR / WAGO	080-0169-04	080-0169-04	
49	-X5	TERMINAL BLOCK	PE	SONEPAR / WAGO	080-0169-05	080-0169-05	
50	-X11	TERMINAL BLOCK	CUSTOMER INTERFACE	SONEPAR / WAGO	080-0169-11	080-0169-11	
51	-X30	SERVICE SOCKET	230V/16ASCHUKO PE CONTACTS	SCHNEIDER ELECTRIC	A9A15310	080-0160-00	
52	-Y1	SOLENOID VALVE	USED FOR DIGITAL VALVE	ECT FLOW CONTROLS...	*	023-0104-00	
53	-Y2	SOLENOID VALVE	USED FOR LIQUID INJECTION	OFFENWANGER	??????	510-****-00	
54	-Y3	SOLENOID VALVE	OIL MONITORING DEVICE	ALCO	#805029	510-0782-00	
55	-Y4	SOLENOID VALVE	OIL MONITORING DEVICE	ALCO	#805029	510-0782-00	

ECN305171	3	LIV / DGS - ADDITIONAL RELAY K20 IMPLEMENTED - PAGE 4	03-15-21	MG	MV		26	SCALE:	DRAWN BY:	DATE:	DATE FORMAT:	SUPERSEDES DWG NO. / REV. NO.:
ECN305171	2	PROBES B1 AND B2 REPLACED BY SENSATA , WIRING OF CABLES W51; W52 CHANGED	09-09-20	MG	JR			1:1	MG	11-21-17	MM-DD-YY	052-3203-00/002
ECN305171	1	MARKING OF CTR RELAY OUTPUTS CHANGED. NOTE ABOUT MAX. Zs ADDED	04-30-19	MG	JH							
ECN305171	0	RELEASED	11-21-18	MG	JH							
ENG. NOTICE No.	REV. No.	REVISIONS	DATE	BY	CHKD	TITLE: DIAGRAM-CIRCUIT WIRING					DRAWING NUMBER: SHEET 9 OF 9 052-3203-00	DWG 2 SIZE

1 2 3 4 5 6 7 8