

POWER SUPPLY 3x400/230V; N; PE; 50Hz
 I max. = 30A; min. Power cable 5G6mm2 min.

FOR CORRECT FUNCTION OF PROTECTION AGAINST INDIRECT CONTACT BY AUTOMATIC DISCONNECTION OF SUPPLY MAX. VALUE OF EARTH FAULT LOOP IMPEDANCE MUST BE:
 $Z_s \leq 1 \Omega$ (002 14A/D; Max. $Z_s=1,07 \Omega$ for $t=0,4s$)
 EN 60204-1 6.3.3; A1

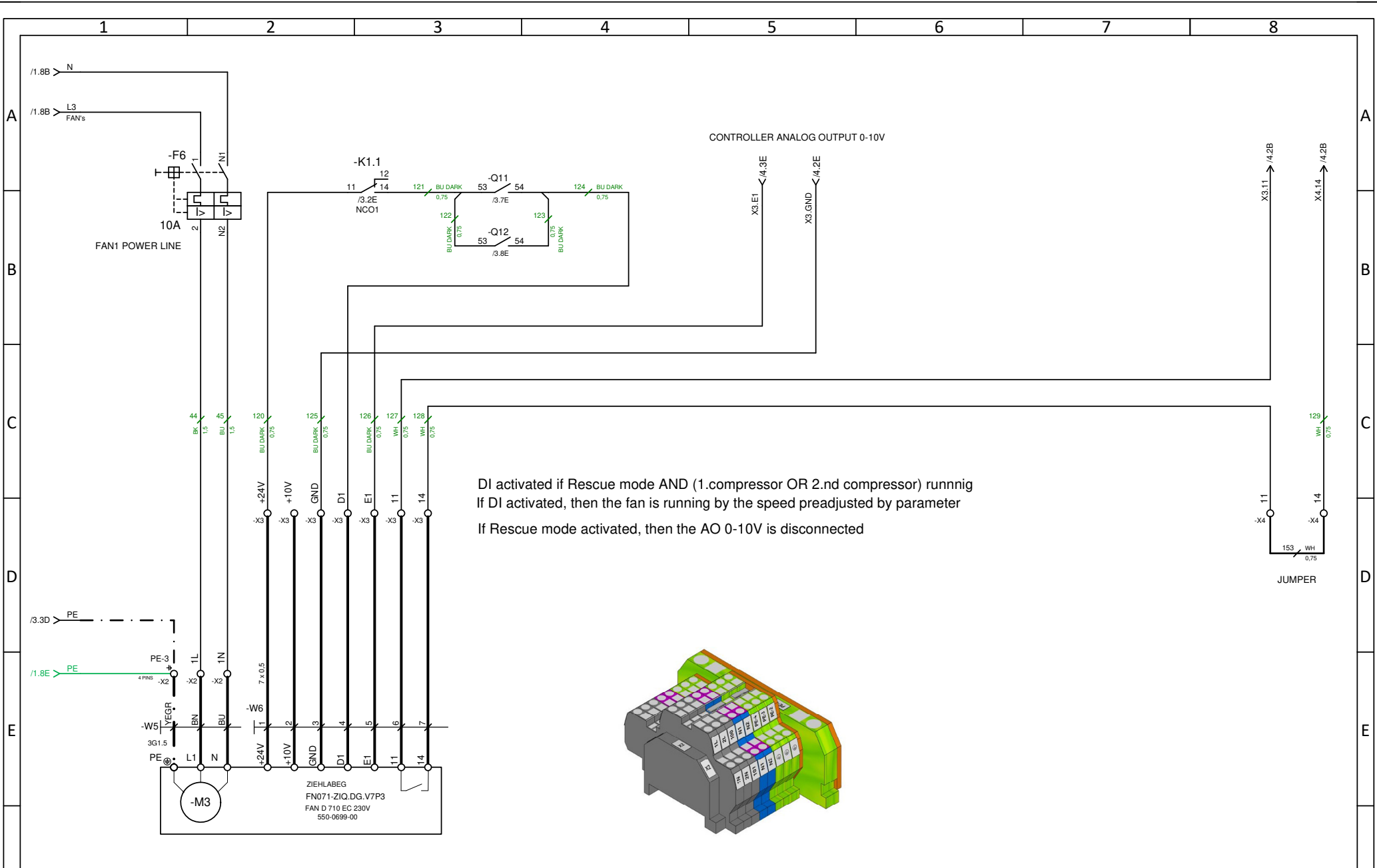
COMPRESSOR COMPARTMENT

OMTE-90(76)D-TFD / 1 FAN UNIT

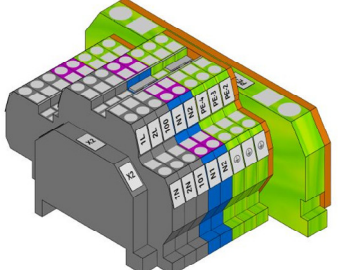
ECN	REV. No.	REVISIONS	DATE	BY	CHKD
ECN305171	1	PROBES B1 AND B2 REPLACED BY SENSATA , WIRING OF CABLES W51 ; W52 CHANGED	09-15-20	MG	JR
ECN305171	0	RELEASED	6-20-19	MG	JH




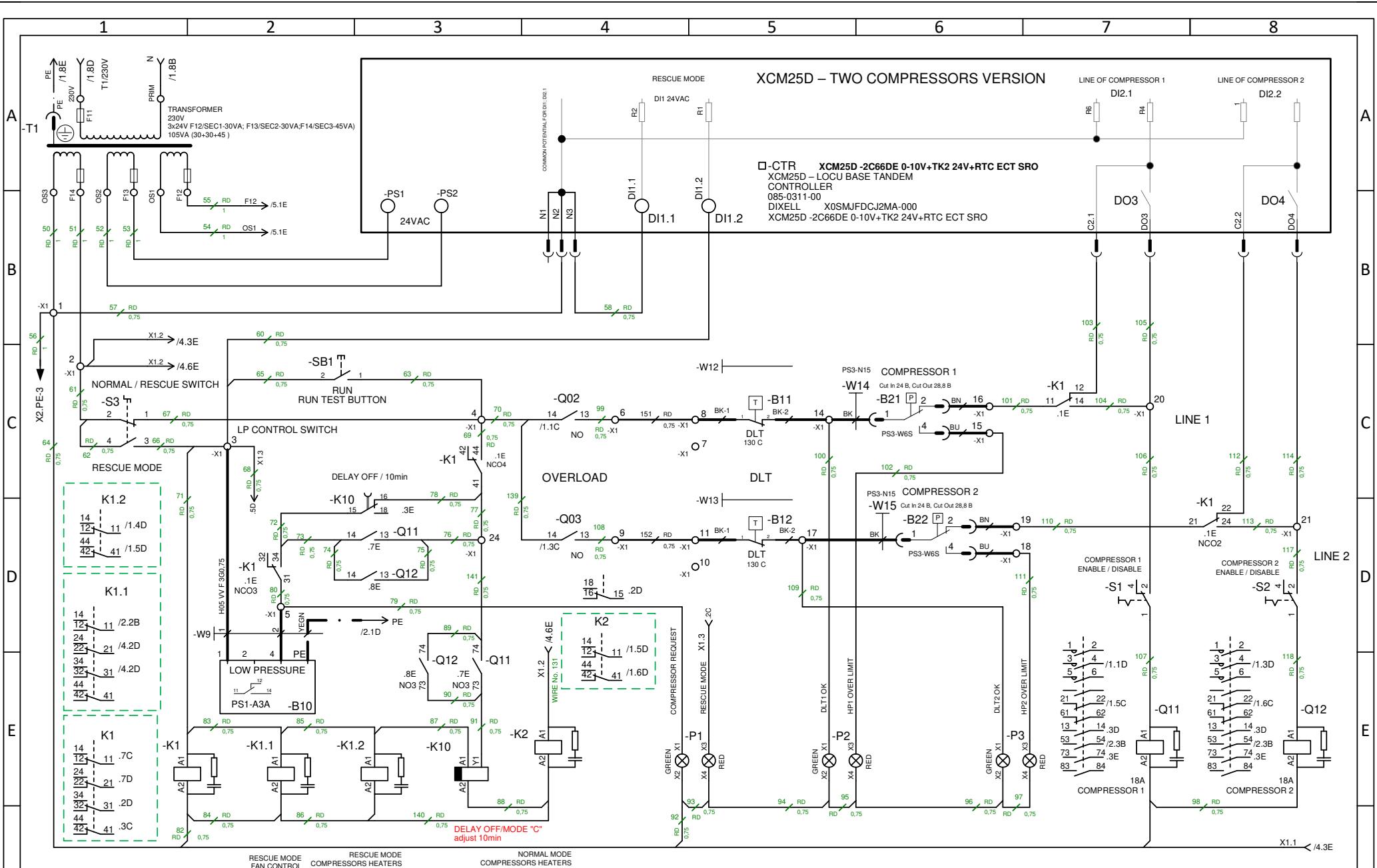
26	SCALE:	DRAWN BY:	DATE:	DATE FORMAT:	SUPERSEDES DWG NO. / REV. NO:
	1 : 1	MG	21-11-17	MM-DD-YY	***
TITLE:					DRAWING NUMBER: SHEET 1 OF 8
DIAGRAM-CIRCUIT WIRING					DWG 2 SIZE



DI activated if Rescue mode AND (1.compressor OR 2.nd compressor) running
 If DI activated, then the fan is running by the speed preadjusted by parameter
 If Rescue mode activated, then the AO 0-10V is disconnected



ECN305171	1	PROBES B1 AND B2 REPLACED BY SENSATA , WIRING OF CABLES W51 ; W52 CHANGED	09-15-20	MG	JR		26	SCALE: 1 : 1	DRAWN BY: MG	DATE: 21-11-17	DATE FORMAT: MM-DD-YY	SUPERSEDES DWG NO. / REV. NO: ***	
ECN305171	0	RELEASED	6-20-19	MG	JH		TITLE: DIAGRAM-CIRCUIT WIRING		DRAWING NUMBER: SHEET 2 OF 8		DWG 2 SIZE		052-3275-00
ENG. NOTICE No.	REV. No.	REVISIONS	DATE	BY	CHKD								

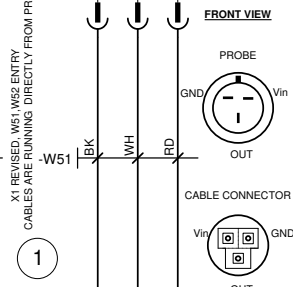
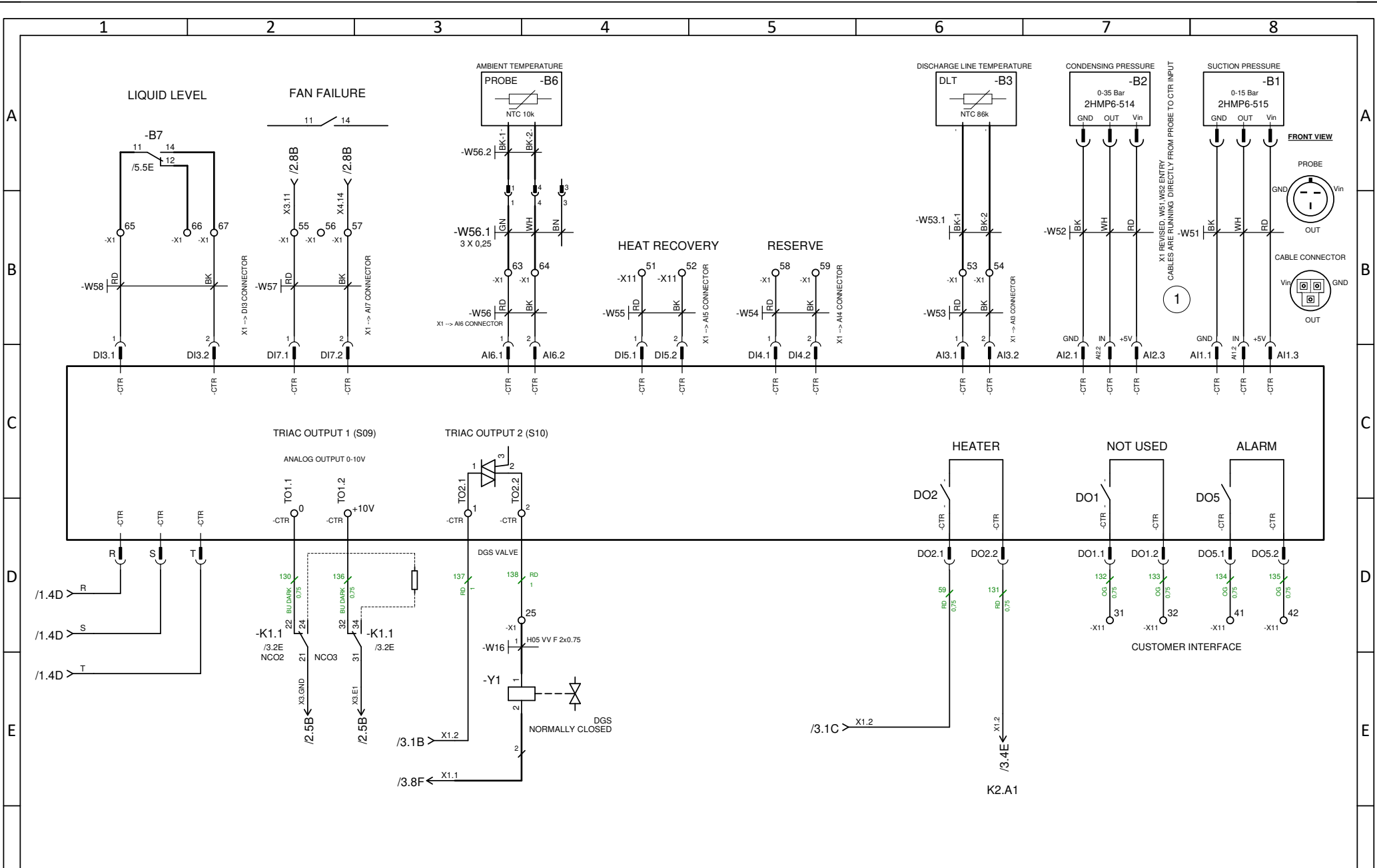


XCM25D - TWO COMPRESSORS VERSION

□-CTR XCM25D -2C66DE 0-10V+TK2 24V+RTC ECT SRO
 XCM25D - LOCU BASE TANDEM
 CONTROLLER
 085-0311-00
 DIXELL X0SMJFDCJ2MA-000
 XCM25D -2C66DE 0-10V+TK2 24V+RTC ECT SRO

ECN305171	1	PROBES B1 AND B2 REPLACED BY SENSATA , WIRING OF CABLES W51 ; W52 CHANGED	09-15-20	MG	JR
ECN305171	0	RELEASED	6-20-19	MG	JH
ENG. NOTICE No.	REV. No.	REVISIONS	DATE	BY	CHKD

	26	SCALE: 1 : 1	DRAWN BY: MG	DATE: 21-11-17	DATE FORMAT: MM-DD-YY	SUPERSEDES DWG NO. / REV. NO.: ***
	TITLE: DIAGRAM-CIRCUIT WIRING					DRAWING NUMBER: SHEET 3 OF 8 052-3275-00



ECN305171		1	PROBES B1 AND B2 REPLACED BY SENSATA , WIRING OF CABLES W51 ; W52 CHANGED	09-15-20	MG	JR		26 SCALE: 1 : 1 DRAWN BY: MG DATE: 21-11-17 DATE FORMAT: MM-DD-YY SUPERSEDES DWG NO. / REV. NO.: ***	TITLE: DIAGRAM-CIRCUIT WIRING	DRAWING NUMBER: SHEET 4 OF 8 052-3275-00 DWG 2 SIZE
ECN305171		0	RELEASED	6-20-19	MG	JH				
ENG. NOTICE No.	REV. No.	REVISIONS		DATE	BY	CHKD				

1

2

3

4

5

6

7

8

A

A

B

B

C

C

D

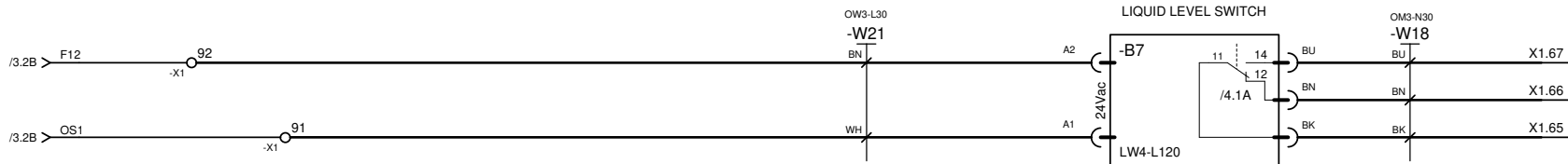
D

E

E

F

F




ECN No.	REV. No.	REVISIONS	DATE	BY	CHKD
ECN305171	1	PROBES B1 AND B2 REPLACED BY SENSATA , WIRING OF CABLES W51 ; W52 CHANGED	09-15-20	MG	JR
ECN305171	0	RELEASED	6-20-19	MG	JH




26	SCALE:	DRAWN BY:	DATE:	DATE FORMAT:	SUPERSEDES DWG NO. / REV. NO:
	1 : 1	MG	21-11-17	MM-DD-YY	***
TITLE:					DRAWING NUMBER: SHEET 5 OF 8
DIAGRAM-CIRCUIT WIRING					052-3275-00
					DWG SIZE 2

1	2	3	4	5	6	7	8
Row	Designation	Comment	Type Designation	PART NUMBER	Manufacturer	Remarks	
1	-W1	COMPRESSOR CABLE	H07 VV F 4G2.5	529-0454-00	LAPP		
2	-W2	COMPRESSOR CABLE	H07 VV F 4G2.5	529-0455-00	LAPP		
3	-W3	HEATERCABLE	H05 VV F 3G1	529-0456-00	ECT		
4	-W3.2	HEATERCABLE	H05 VV F 3G1	529-0459-00	SPEL		
5	-W4	HEATER CABLE	H05 VV F 3G1	529-0457-00	ECT		
6	-W4.2	HEATERCABLE	H05 VV F 3G1	529-0460-00	SPEL		
7	-W5	FAN1 POWER	3G1.5	529-0399-00	SPEL		
8	-W6	FAN1 CONTROL CABLE	7 x 0,5	529-0400-00	SPEL		
9	-W9	CONTROL CABLE PRESSOSTAT	H05 VV F 3G0,75	529-0403-00	SPEL		
10	-W12	DLT THERMOCONTACT 1		529-0475-00	ECT	WIRES ARE PART OF THE SWITCH	
11	-W13	DLT THERMOCONTACT 2		529-0476-00	ECT	WIRES ARE PART OF THE SWITCH	
12	-W14	HP SWITCH LINE1	PS3-N15	529-0408-00	ALCO / ECT		
13	-W15	HP SWITCH LINE 2	PS3-N15	529-0409-00	ALCO / ECT		
14	-W16	DGS VALVE	H05 VV F 2x0.75	529-0458-00	ECT		
15	-W16.2	DGS VALVE	H05 VV F 2x0.75	529-0461-00	SPEL		
16	-W18	LLS RELAY OUTPUT	OM3-N30	529-0412-00	ALCO / ECT		
17	-W21	LIQUID LEVEL MONITORING POWER	OW3-L30	529-0415-00	ALCO / ECT		
18	-W51	SENSATA PROBE CABLE	RD,BK,WH; XLPE	529-0555-01	SENSATA	CONNECTORS ON BOTH SIDES	
19	-W52	SENSATA PROBE CABLE	RD,BK,WH; XLPE	529-0556-01	SENSATA	CONNECTORS ON BOTH SIDES	
20	-W53	DLT PROBE	X1 --> AI3 CONNECTOR	529-0422-00	SPEL	INTERNAL WIRING: CTR INPUT AI3 -->X1	
21	-W53.1	CC B3 DLT	NTC 86k / 043-0200-01	529-0423-00	DIXELL / ECT	PROBE 3 --> X1	
22	-W54	DI4	X1 --> AI4 CONNECTOR	529-0424-00	SPEL	INTERNAL WIRING: CTR INPUT AI4 -->X1	
23	-W55	DI5	X1 --> AI5 CONNECTOR	529-0425-00	SPEL	INTERNAL WIRING: CTR INPUT AI5 -->X1	
24	-W56	AI6	X1 --> AI6 CONNECTOR	529-0426-00	SPEL	INTERNAL WIRING: CTR INPUT AI6 -->X1	
25	-W56.1	AMBIENT PROBE B6 - 2	UNITRONIC LiYY 3x0.25	529-0427-00	SPEL	X1-->CONNECTOR X56-FEMALE	
26	-W56.2	AMBIENT PROBE B6 - 3	B6 / 043-0198-00 -->X56.2 MALE	529-0428-00	DIXELL / ECT	PROBE B6 --> CONNECTOR X56 MALE	
27	-W57	DI7	X1 --> AI7 CONNECTOR	529-0429-00	SPEL	INTERNAL WIRING: CTR INPUT AI7 -->X1	
28	-W58	DI3	X1 --> DI3 CONNECTOR	529-0430-00	SPEL	INTERNAL WIRING: CTR INPUT DI3 -->X1	

ECN305171		1	PROBES B1 AND B2 REPLACED BY SENSATA , WIRING OF CABLES W51 ; W52 CHANGED	09-15-20	MG	JR		26	SCALE:	DRAWN BY:	DATE:	DATE FORMAT:	SUPERSEDES DWG NO. / REV. NO:
ECN305171		0	RELEASED	6-20-19	MG	JH			1: 1	MG	21-11-17	MM-DD-YY	***
ENG. NOTICE No.	REV. No.	REVISIONS			DATE	BY			CHKD	TITLE:			DRAWING NUMBER: SHEET 6 OF 8
1	2	3	4	5	6	7	8	DIAGRAM-CIRCUIT WIRING			052-3275-00		

LEGEND

ITEM	SYMBOL	PART	PART DESCRIPTION	SUPPLIER	SUPPLIER CODE	PART NUMBER	Remarks
1	-B1	PRESSURE TRANSDUC...	0-15 Bar	SENSATA	2HMP6-515	085-0329-00	With male connector PBT-BLK
2	-B2	PRESSURE TRANSDUC...	0-35 Bar	SENSATA	2HMP6-514	085-0330-00	With male connector PBT-BLK
3	-B3	THERMISTOR	DISCHARGE TEMPERATURE	DIXELL	#	043-0200-01	
4	-B6	THERMISTOR	AMBIENT TEMPERATURE	DIXELL	#	043-0198-00	
5	-B7	MONITORING DEVICE	LIQUID LEVEL	ALCO	#805490	085-0300-00	
6	-B10	PRESSURE SWITCH	LP CONTROL SWITCH	ALCO	# 4370700	085-7049-00	ADJUSTABLE - FOR RESCUE MODE
7	-B11	THERMOCONTACT	DISCHARGE LINE -1	EMERSON		085-0227-00	
8	-B12	THERMOCONTACT	DISCHARGE LINE -1	EMERSON		085-0227-00	
9	-B21	PRESSURE SWITCH	HIGH PRESSURE LIMIT	ALCO	#715696	039-0029-00	
10	-B22	PRESSURE SWITCH	HIGH PRESSURE - LIMIT	ALCO	#715696	039-0029-00	
11	-CTR	CONTROLLER	XCM25D - LOCU BASE TANDEM	DIXELL	XCM25D -2C66DE 0...	085-0311-00	XCM25D -2C66DE 0-10V+TK2 24V+R...
12	-E1	CRANKCASE HEATER	COMPRESSOR	ECT	018-0095-03	018-0095-03	
13	-E2	CRANKCASE HEATER	COMPRESSOR	ECT	018-0095-03	018-0095-03	
14	-F1	CIRCUIT BREAKER	RST CTR INPUTS - 2A / B	SCHNEIDER ELECTRIC	A9F73302	043-0263-00	
15	-F2	CIRCUIT BREAKER	HEATER 1 - 2A / C	SCHNEIDER ELECTRIC	A9F84102	043-0208-00	
16	-F3	CIRCUIT BREAKER	HEATER 2 - 2A / C	SCHNEIDER ELECTRIC	A9F84102	043-0208-00	
17	-F4	CIRCUIT BREAKER	SOCKET 230V - 16A / B	SCHNEIDER ELECTRIC	A9F83116	043-0228-00	FOR SERVICE ONLY
18	-F5	CIRCUIT BREAKER	CONTROL TRANSFORMER - 2A / C	SCHNEIDER ELECTRIC	A9F84102	043-0208-00	
19	-F6	CIRCUIT BREAKER	POWER LINE FAN1 - 1P+N 10A / C	SCHNEIDER ELECTRIC	A9F84610	043-0218-00	
20	-K1	RELAY	RESCUE MODE	SCHNEIDER ELECTRIC	RXM4AB2B7	040-0212-00	
21	-K1.1	RELAY	RESCUE MODE	SCHNEIDER ELECTRIC	RXM4AB2B7	040-0212-00	
22	-K1.2	RELAY	24Vac; 2 NCO; with LED	SCHNEIDER ELECTRIC	RXM2AB2B7	040-0211-00	
23	-K2	RELAY	HEATERS NORMAL MODE	SCHNEIDER ELECTRIC	RXM2AB2B7	040-0211-00	
24	-K10	RELAY	TIME OFF (10min.)	SCHNEIDER ELECTRIC	RE17RMMU	040-0199-00	
25	-M1	MOTOR	COMPRESSOR 1 (OMTE-90D-TFD)	ECT	ZBD45KCE-TFD-551	497-0476-00	DIGITAL compressor (In=12,1A)
26	-M1'	MOTOR	COMPRESSOR 1 (OMTE-76D-TFD)	ECT	ZBD38KCE-TFD	497-0***-00	DIGITAL compressor (In=11,3A)
27	-M2	MOTOR	COMPRESSOR 2 (OMTE-90D-TFD)	ECT	ZB45KCE-TFD-551	497-3544-01	ON / OFF compressor (In=13,1A)
28	-M2'	MOTOR	COMPRESSOR 2 (OMTE-76D-TFD)	ECT	ZB-38KCE-TFD	497-0***-00	ON / OFF compressor (In=12.8A)
29	-M3	MOTOR	EC FAN	ZIEHLABEG	FN071-ZIQ.DG.V7P3	550-0699-00	
30	-P1	SIGNAL LAMP	RED =RESCUE MODE;	SCHNEIDER ELECTRIC	A9E18335	039-0052-00	
31	-P2	SIGNAL LAMP	GREEN = B11 CLOSED;	SCHNEIDER ELECTRIC	A9E18335	039-0052-00	

ECN305171	1	PROBES B1 AND B2 REPLACED BY SENSATA , WIRING OF CABLES W51 ; W52 CHANGED	09-15-20	MG	JR		26	SCALE:	DRAWN BY:	DATE:	DATE FORMAT:	SUPERSEDES DWG NO. / REV. NO:
ECN305171	0	RELEASED	6-20-19	MG	JH			1:1	MG	21-11-17	MM-DD-YY	***
ENG. NOTICE No.	REV. No.	REVISIONS	DATE	BY	CHKD	TITLE: DIAGRAM-CIRCUIT WIRING				DRAWING NUMBER: SHEET 7 OF 8	DWG 2 SIZE	
1	2	3	4	5	6	7	8			052-3275-00	2	

LEGEND

ITEM	SYMBOL	PART	PART DESCRIPTION	SUPPLIER	SUPPLIER CODE	PART NUMBER	Remarks
32	-P3	SIGNAL LAMP	GREEN = B12 CLOSED;	SCHNEIDER ELECTRIC	A9E18335	039-0052-00	
33	-Q01	MAIN SWITCH	INTERPACT INS40 - 4P	SCHNEIDER ELECTRIC	28917	543-0290-00	
34	-Q02	MOTOR CIRCUIT BREAK...	9-14 A	SCHNEIDER ELECTRIC	GV2 ME163	071-0724-01	FOR ADJUSTING SEE MOTOR In
35	-Q03	MOTOR CIRCUIT BREAK...	9-14 A	SCHNEIDER ELECTRIC	GV2 ME163	071-0724-01	FOR ADJUSTING SEE MOTOR In
36	-Q11	CONTACTOR	COMPRESSOR 1	SCHNEIDER ELECTRIC	LC1 D183B7	012-0268-02	
37	-Q12	CONTACTOR	COMPRESSOR 2	SCHNEIDER ELECTRIC	LC1 D183B7	012-0268-02	
38	-RCD	RCD	SERVICE SOCKET PROTECTION	SCHNEIDER ELECTRIC	A9Z11225	043-0241-00	
39	-S1	TOGGLE SWITCH	DISABLING OF 1. COMPRESSOR	SCHNEIDER ELECTRIC	A9E18070	043-0204-00	
40	-S2	TOGGLE SWITCH	DISABLING OF 2. COMPRESSOR	SCHNEIDER ELECTRIC	A9E18070	043-0204-00	
41	-S3	ROTARY SWITCH	NORMAL / RESCUE MODE SWITCH...	SCHNEIDER ELECTRIC	A9E15122	043-0262-00	
42	-SB1	PUSH BUTTON	TEST BUTTON - COMPRESSOR RUN	SCHNEIDER ELECTRIC	A9E18032	043-0205-00	
43	-T1	TRANSFORMER	CONTROL CIRCUITS	ELEKTROKOV ZNOJMO	JOC E2838-0095	037-0044-00	
44	-X1	TERMINAL BLOCK	CONTROL CIRCUITS	SONEPAR / WAGO	60349658_8001-009...	080-0169-01/001	REVISED
45	-X2	TERMINAL BLOCK	FAN's POWER	SONEPAR / WAGO	60349702_8001-009...	080-0169-02	
46	-X3	TERMINAL BLOCK	FAN's CONTROL CIRCUIT	SONEPAR / WAGO	60349787_8001-009...	080-0169-03	
47	-X4	TERMINAL BLOCK	FAN's CONTROL CIRCUIT	SONEPAR / WAGO	60349795_8001-009...	080-0169-04	
48	-X5	TERMINAL BLOCK	PE	SONEPAR / WAGO	60349825_8001-009...	080-0169-05	
49	-X11	TERMINAL BLOCK	CUSTOMER INTERFACE	SONEPAR / WAGO	8001-0099/2000-8209	080-0169-11	
50	-X30	SERVICE SOCKET	230V/16ASCHUKO PE CONTACTS	SCHNEIDER ELECTRIC	A9A15310	080-0160-00	
51	-Y1	SOLENOID VALVE	DGS	-	KIT 998-0666-00	023-0060-19	

ECN305171	1	PROBES B1 AND B2 REPLACED BY SENSATA , WIRING OF CABLES W51 ; W52 CHANGED	09-15-20	MG	JR	 EMERSON	26	SCALE: 1:1	DRAWN BY: MG	DATE: 21-11-17	DATE FORMAT: MM-DD-YY	SUPERSEDES DWG NO. / REV. NO: ***
ECN305171	0	RELEASED	6-20-19	MG	JH		TITLE: DIAGRAM-CIRCUIT WIRING	DRAWING NUMBER: SHEET 8 OF 8		DWG 2 SIZE		
ENG. NOTICE No.	REV. No.	REVISIONS	DATE	BY	CHKD		052-3275-00					

THIS DRAWING AND INFORMATION CONTAINED HEREIN ARE THE EXCLUSIVE PROPERTY OF EMERSON CLIMATE TECHNOLOGIES, INC AND/OR ITS AFFILIATES (COLLECTIVELY "EMERSON") AND SHALL BE RETURNED UPON DEMAND AND SHALL NO BE REPRODUCED IN WHOLE OR IN PART, DISCLOSED TO ANYONE ELSE OR USED, WITHOUT THE WRITTEN CONSENT OF EMERSON.